

GREAT MILTON BULLETIN

August 2024

Published by the Parish Council

No. 600



Freedom of Information Act – Parish Council Publication Scheme

The Freedom of Information Act 2000 provides rights of public access to information held by Public Authorities. The Parish Council adopted a new publication scheme in November 2019: details can be found on the Parish Council Website at <https://www.great-milton.co.uk/freedom-of-information/>. Residents can see records of the policies and practices of the Parish Council including minutes, financial information and responses to planning consultations, on request from the Parish Clerk or via the website.

Great Milton Parish Council

Chairman:	Stephen Harrod	01844 278068
Ward:	Church Road to Monkey Farm/The Priory	
Vice Chairman:	Bill Fox	01844 279716
Ward:	Thame Road, inc Fullers Field and Green Hitchings	
Councillor:	David Harms	
Ward:	The Green from Priory Bank to Tara/Applewood	
Councillor:	—	—
Ward:	The Old Garage to North End Cottage, Lower End	
Councillor:	Sarah MacMahon	07580 581655
Ward:	Thame Road from Green Hitchings to A329	
Councillor:	Malcolm Horsley	07970 924194
Ward:	Kings Head House/Red Roofs to Wheatley Boundary	
Councillor:	Peter Allen	01844 278334
Ward:	Milton Common	

Clerk/Responsible Financial Officer: Alan Pickett – 07840 762271
contact@clerkgreatmilton.co.uk

Parish Council Representatives

Rec Ground Committee:	James Cunningham (Chair), Michele Block (Vice-Chair)
Old Field Charity:	Adrian Buckmaster (Chair), David Mackrory (Treasurer)
Hard Surface Play Area:	Mark Nethercleft (Chair), Dan Bennett (Treasurer), Sarah MacMahon (Membership)
Neighbourhood Watch:	Rod Snowdon
Kent & Couling Charity:	Simon Cronk, Tricia Treanor, Sue Denham
Sheppard Trust:	Simon Cronk, Jane Willis
Neighbours' Hall:	Mike Robinson (Chair), Christine Donnelly

Front Cover: Tony D'Anger with his Harvest Festival display.

Photo: Margaret Rogers.

Key Contacts:

Local Governance

Oxfordshire County Council	01865 792422	Oxfordshire.gov.uk
South Oxfordshire District Council	01235 422422	Southoxon.gov.uk
County Councillor: Freddie Van Mierlo	07944 492438	freddie.vanmierlo@oxfordshire.gov.uk
District Councillor: Georgina Heritage	07951 477144	Georgina.Heritage@southoxon.gov.uk
Great Milton Parish Council		
Stephen Harrod (Chair)	01844 278068	
Alan Pickett (Clerk)	07840 762271	contact@clerkgreatmilton.co.uk
Report potholes, fly-tipping, vandalism, broken paving		Fixmystreet.com
OCC Family Information Service	08452 262636	fis.enquiries@oxfordshire.gov.uk
OCC Highways	0845 310 1111	highway.enquiries@oxfordshire.gov.uk
Missed Bin Collection	03000 610610	admin.southoxford@biffa.co.uk
Bulky Household Waste Collection	01235 422406	waste.team@southandvale.gov.uk
SODC Housing	01235 422422	housing@southandvale.gov.uk
SODC Planning Applications	01235 422600	planning@southoxon.gov.uk

Services

Emergency - Police, Fire, Ambulance	999	
Police non-emergency	101	thamesvalley.police.uk
GP Surgery, Morland House	01865 872448	morland-house.co.uk
NHS non-emergency	111	nhs.uk
Gas Emergency	0800 111 999	nationalgrid.com/uk/safety/
Electricity Outage	0800 072 7282	sse.co.uk
Burst pipe or leak	0800 714 614	thameswater.co.uk
Floodline	0345 988 1188	gov.uk/check-flood-risk

Local information

St. Mary's Church: Rev. Simon Cronk		simon.cronk@btinternet.com
Methodist Church: Rev. Stephen Spain	01865 763676	
Neighbourhood Watch: Rod Snowdon	07836 728919	bigsnodi@hotmail.co.uk
Citizens Advice Oxfordshire	03444 111 444	caox.org.uk
The Maple Tree Children's Centre	01865 873916	mapletreecc@oxfordshire.gov.uk
Great Milton Neighbours Hall	07970 264667	
Great Milton Pavilion & Recreation Ground	01844 278116	
Great Milton Website		contact@clerkgreatmilton.co.uk http://www.greatmilton.co.uk
Great Milton Bulletin	01844 278347	contact@clerkgreatmilton.co.uk gmbulletin@hotmail.co.uk
Great Milton Primary School	01844 279388	gmilton.org
Wheatley Park School	01865 872441	www.wheatleypark.org

Transport

Comet - for people without access to suitable public transport	01865 323201	oxfordshire.gov.uk/comet
46 Bus Service	01865 785400	info@oxfordbus.co.uk
Arriva (280) Bus	0344 800 4411	arrivabus.co.uk
Oxford Tube (Buses to London)	01865 772250	oxfordtube.com
Park & Ride		oxfordshire.gov.uk/cms/public-site/parkandride
National Rail Enquiries	03457 484950	nationalrail.co.uk

Parish Council News

Notes of the meeting of Great Milton Parish Council held at the Pavilion on Monday 16th September 2024 at 7.30pm.

Present: Cllrs S Harrod (Chair), B Fox (Vice-chair), M Horsley and D Harms.

In attendance: Alan Pickett (Clerk), Tim Darch (former Parish Clerk, observing), Andy Noble (prospective Councillor, observing) and 4 members of the public.

Prior to any business, those in attendance were advised that despite his recent appointment Alan Pickett would be unable to continue as Parish Clerk beyond today's meeting for personal reasons. Councillors expressed regret at this development but understood and accepted Mr Pickett's decision. Mr Pickett was formally appointed as Clerk for this meeting, but will not be expected to continue his duties.

Apologies for Absence

Apologies were received in advance from Cllr Georgina Heritage (SODC), Cllr Freddie Van Mierlo (OCC) and Cllr Sarah MacMahon.

Variation of order of business

Business was conducted in the order prescribed by the agenda.

Declarations of members' interest (if any)

No interests were declared pertaining to matters on the agenda.

Matters to Report

Monthly reports from the county and district councillors were received. Having digested the reports, Cllr Harrod highlighted the imminent Joint Local Plan consultation and the National Planning Policy Framework consultation, and the availability of Cllr Heritage's SODC councillor's fund of £5,000 which could be used for local projects.

Correspondence and Public Discussion

The 126 and 127 Tuesday and Thursday bus services are currently under review by the County Council. The County Council advises that usage is better on Tuesdays (for Thame Market Day) than on Thursdays. It was proposed to suggest the removal of the Thursday service if it ensures the continuation of the better-used Tuesday service. The Parish Council will respond in due course.

A member of the public in attendance raised concerns over water discharge onto their land from a neighbouring property which has been subject to a recent retrospective planning approval for the installation of a menage, which the Parish Council supported. The issue was outlined and discussed, and a plan for mitigation was outlined, which essentially comprised the construction of a drainage ditch. Councillors were supportive of the plan and suggested that the member of the public should proceed with proposing it to their neighbour.

A member of the public in attendance expressed disappointment at the lack of verge cutting in the village in the summer months, which now requires urgent attention. An offer was made to assist with grass cutting themselves, though a cooperative approach would be necessary to cover the entire village. Councillors were grateful for this offer, but it was agreed to contact the current contractor to discuss their performance and urge immediate remedial action prior to implementing an alternative approach.

A member of the public in attendance asked whether grass on areas of village green which have been damaged by the location of a skip there would soon be restored. Councillors have confirmed that this will take place between October and November.

Planning Applications

The following planning applications received from SODC were considered:

P24/S1077/FUL - Mount Pleasant Farm Thame Road Great Milton OX44 7HX. Erection of two x 4-bedroom dwellings with x1 double garage and x1 single garage (resubmission of planning permission P19/S2605/FUL).

An application for a similar development at this location was previously submitted some years ago. Recent local consultation on the latest application revealed no significant issues other than with planned windows potentially overlooking a neighbouring property and concerns over the removal of trees which may have been protected. After discussion councillors agreed unanimously to express NO STRONG VIEWS on the proposed development.


The following planning decisions received and other matters were discussed:

P24/S1999/FUL Land to the rear of number 6 Thame Road OX44 7HY. Granted.

P23/S2906/FUL - Milton Pools Fishery near Milton Common OX44 7JE. The retention of the existing building and continued use as offices (mail order company). (As amended by agent's letter dated 24 October 2023).

P24/S0073/FUL - Common Cottage London Road Milton Common OX9 2NU. Single dwelling (as amplified by noise assessment and additional information received 9 August 2024). No action required.

P24/S2739/HH - The Old Vicarage Church Road Great Milton Oxford OX44 7PB. Rebuild existing external garden wall to same length as it currently stands and to a consistent height matching original height of wall. No action required.

P24/S2738/S73 - The Old Vicarage Church Road Great Milton Oxford OX44 7PB. Variation of conditions 2 (Approved plans) and 3 (Materials) on application P24/S0994/HH - to allow for a change in the approved roof material for the new pool area house from clay tiles to corrugated iron. (Alterations and refurbishment of the main house. Demolition of log store outbuilding and garage and replacement with new oak framed garage and new double storey extension to the Coach House. 

Alterations to the Apple Store for use as a gym. New outdoor swimming pool and pool house & associated landscaping). No action required.

P24/S2740/LB - The Old Vicarage Church Road Great Milton Oxford OX44 7PB. Rebuild existing external garden wall to same length as it currently stands and to a consistent height matching original height of wall. No action required.

The following planning appeals were considered but no concerns were raised:

P23/S3459/FUL – White Ash London Road Milton Common Thame OX9 2NU. Appeal dismissed. Continued use of single storey building as storage without compliance with condition 3 of P02/N0682. (As amended by agent's letter dated 24 October 2023).

P23/S2616/FUL – Land adjacent to the Yard Thame Road Great Milton OX44 7NY. Appeal dismissed.

Minutes of the previous meeting

The minutes of the meeting of the Parish Council held on Monday July 17th 2024 were received, reviewed, agreed and signed as an accurate record.

Financial Resolutions

The following cheques for payment were authorised and signed:

Alan Pickett: Salary, Tax and Expenses for September

NOTE: it was agreed between Mr Pickett and councillors that given the circumstances no salary would be paid.

Shield Maintenance Dog Waste July £92.82

Shield Maintenance Dog Waste Aug: £92.82

J M Dudley (Bulletin): £311.40

Tactical Facilities Management - July £590.60

Tactical Facilities Management - Aug £590.60

NOTE: payment will be delayed pending discussions with Tactical Facilities Management over service quality

Moore £48.00

BT Office/e-mail package: £14.83 (paid by monthly Direct Debit)

Hugo Fox: web support: £23.99 (paid by monthly Direct Debit)

The monthly bank reconciliation, accounts and bank statements for July and August were received and signed. The reconciled bank balance as at 16 September 2024 was £30,129.40.

Parish Clerk and Councillors' update of matters in hand

A resident has requested permission to park on village green land outside their home to minimise the distance required to walk from their car. After discussion it was AGREED to advise the resident that permission would be granted on a temporary

basis, dependent upon the restoration of any damaged grass should the property be eventually sold. Councillors subsequently debated the wider issue of parking on village green verges with specific regard to setting precedents, and whether action should be taken given that this practice is already ongoing in some locations. Councillors AGREED to take no wider action at this stage, given the potential resulting increase in roadside parking which is already a cause for concern.

An OCC Highways meeting is scheduled for 1030 on Monday 23 September, at which the following will be discussed:

- The potential for speed indicator devices to record number plates of speeding vehicles
- Potholes on Thame Road
- Slow-down sign by the Forties on Windmill Hill
- A40 through Milton Common – eroded at edges
- Request for a white centre line on Priory Corner, Church Road

Updates of councillors/clerk names and contact details in the Bulletin and on the website will be actioned as soon as is practical.

A meeting will be arranged with the school and the Recreation Ground Committee to discuss parking, especially during events.

The Parish Council proposes that its monthly meeting will be rescheduled to the second Wednesday of every month from September 2024 onwards: however this is yet to be formally agreed.

Security in the village

No security issues were raised.

The meeting closed at 8.30pm. The next meeting of Great Milton Parish Council will be held on Monday 21st October starting at 7.30pm in The Pavilion.

Bible Study Group

A heads up for anyone who might be interested in joining us...!! We meet twice a month, the first meeting being on the first Thursday of the month at 7pm, the second meeting of the month being on the 3rd Thursday of the month at 4.00pm. This enables folk who are working full time to join us as well as those who prefer afternoon meetings. The October meeting dates are October 3rd at 7.00 pm at Boundary House on the High Street in Little Milton and October 17th at 4pm at Northend Cottage in Great Milton. For further details and a chat about possibly joining us please do telephone us on 01844 278029...we're a lovely group!

I.D. and S.A. Dennis

Benefice Services for October

	St. Mary the Virgin Great Milton	St. James's Little Milton	St. Peter's Great Haseley
Sunday 6th		Holy Communion 9:00am	Family Worship Harvest Festival 10:30am
Sunday 13th	Holy Communion 9:00am	Family Worship Harvest Festival 10:30am	
	Bring & Share Lunch at The Pine Lodge, Little Milton 12:30pm		
Sunday 20th	Family Worship 10:30am		Holy Communion 9:00am
Sunday 27th		Benefice Morning Worship 10:30am	Holy Communion BCP 9:00am

Benefice Services for November

	St. Mary the Virgin Great Milton	St. James's Little Milton	St. Peter's Great Haseley
Sunday 3rd		Holy Communion 9:00am	Family Worship 10:30am

The Rector's Pint

At the beginning of September, we visited our daughter Becca for a precious few days in St. Anton in Austria, where she lives. Whilst there, I listened to an album that I had read about, *Wild God*, by the musician and artist Nick Cave, with the band he sometimes plays with, *The Wild Seeds*. The music is nuanced and cryptic but explores themes of grief (Nick Cave has lost two sons in tragic circumstances), grace, and the possibility of healing. The song entitled *Joy*, deeply moved me. It was a journey through grief to joy, describing what I can only suppose to be an encounter with one of his dead sons; "Oh a ghost in giant sneakers, laughing, stars around his head". Throughout the song the refrain "Have mercy on me please" is spoken as a prayer. What really got to me were these words,

"Sat on a narrow bed, this flaming boy,

*He said, 'We've all had too much sorrow, now is the time for joy',
And all across the world, they shout angry words about the end of love, yet the stars
stand above the earth, bright triumphant metaphors of love.*

Blind us all who care to stand and look beyond above”.

Sometimes, I sit in a church meeting and wonder, What are we all about? as we get bogged down by the needs of the church's fabric and finances. It took a tantalisingly nuanced song by someone who, without necessarily calling himself a Christian, admits to going to his local church because there he finds hope and wonder and joy, to bring me to a deep place of acknowledging that within me were sadnesses that I had pushed down, and I needed to find that joy again. I simply let it out, and it was truly cathartic.

I do what I do because I still hold to the belief that if we care to stand and look 'beyond above' there is actually something to find! I do what I do because I still believe that 'the beyond above' has been revealed to us, bringing peace and hope and purpose. I believe that we are met in our pain and offered healing and joy. Nick Cave's song is not 'Christian' in the literal sense, but it touched something deep that allowed me to identify for a moment what I could only understand as God. I can think of only one specifically 'Christian' song that has ever managed to come close to that.

We are in October, the Autumn has come. This is the season when we can hope for some clear night skies when the stars will be particularly bright. You might not go off and listen to Nick Cave's song (although I highly recommend that you do) but please, do get outside on the next clear night, look up, and see the bright triumphant metaphors of love and care. Stand and look beyond above.

Simon

St Mary's Churchyard Autumn Clearance 2024

This year's spring clearance will take place on Saturday 19th October between 10:00am and 12:30pm.

All are welcome, please, bring your own tools (leaf rake, secateurs, spade etc) and gloves. The work is light, variable and good fun. No previous gardening expertise is needed but is nevertheless most welcome.

Please let Tony Jefferis know if you plan to come: to ensure we have adequate refreshments, which are served at 11.15.

Contact details tjefferis@btinternet.com or 01844 278743

Great Milton Methodist Church Services

For further info. please contact Rev Stephen Spain on 01865 763676

October 2024				
Date	Time	Church	Preacher	Comments
6th	11:00am	Gt. Milton	Joanna Tulloch	
13th	11:00am	Gt. Milton	Local Arrangement	
20th	11:00am	Gt. Milton	Rev. Stephen Spain	Holy Communion
27th	11:00am	Gt. Milton	Joanna Tulloch	

Harvest Festival

We celebrated Harvest Festival in our beautifully decorated church.

Thank you to the dedicated team of flower arrangers and gardeners. The fresh local produce, including a magnificent box from Le Manoir, was given to the Porch for their wonderful cafe. They provide between 50 and 60 hot meals every day to the homeless in Oxford. After our worship we gathered at the Pavilion for a celebratory lunch which was enjoyed by all and raised £70 for Porch funds.

Many thanks to all who contributed delicious food, supported the cause and helped to wash up afterwards.

Church Wardens

Village Christmas Card 2024

After the huge success of last year's Village Christmas card, we are really excited to start fundraising for and preparing the 2024 Great Milton Christmas Card!

For those new to the village or who may have forgotten, the Village Christmas Card is a great way for us all to wish our neighbours a Merry Christmas, whilst raising much needed funds for charity. Last year a huge number of households in the village came together to raise nearly £2,500 for charity through the card, and we were so grateful for your support.

We will begin collecting messages and donations for the card shortly. Forms (and an example of last year's card) will be available in the Village Shop from the beginning of November. We will also include a copy of the form in the November Bulletin. Completed forms should be dropped off at the Village Shop by Sunday 1 December.

We will then collate the messages and arrange for the card to be professionally designed and printed, and distributed to every home in the village in time for Christmas.

The festive photographs that will be on the front of this year's card were taken around the village by Nick Belcher last Christmas – so you may find your home on this year's card!

As before, 100% of donations will go to charity as all design, printing and incidental costs are very generously being supported by local businesses and benefactors. Le Manoir aux Quat'Saisons have again offered a voucher for dinner for two for one lucky household that contributes to the card.

This year, we are raising money for the Oxford Children's Hospital Charity. The Charity provides vital support for our local Children's Hospital and, from personal experience, we know that it funds the extras that make time in hospital a bit more bearable for children and their families.

If you have any questions about the card (or would like to help the elves with delivering the card this year), please let one of us know (rebecca.longshaw@longshaws.com).

Rebecca Barry and Laura Putt

The Crash of the Horsa Glider on the Eve of D-Day



As an 11 year old, I can remember well seeing the gliders coming up from Oakley Airfield, or as we know it today, Worminghall Airfield. As you know, gliders have to be towed until they get to their target – many of them did not gain height behind their tow planes – they were overloaded probably. One passing over the area now known as the sewer treatment works at Lower End, broke loose – the tow rope parted and it landed in Mr Leslie Hobbs' (now Charles Peers) field just opposite. There were no injuries or any fire, as they are engineless! The paratroopers all got out unharmed. They were loaded with dozens of folding bikes. It took days to dismantle the glider – there was wood everywhere!



Great Milton Athletic Club

The 2024 Summer Outdoor Season

Great Milton athletics club competed in 16 track and field competitions over the summer. The U13s upwards (U13s are school Y6 and Y7, U15s Y8 & Y9, U17s U10 & Y11) take part in the full range of events, whilst the U11s (Y3-Y5) take part in Quad Kids – 75m, long jump, vortex howler throw, and 600m – which is a friendly and relaxed introduction to athletics.



Our QKs were Hugo Szekley, Emma Bingam, Flo Bradley, Jesca Storey and seasoned campaigner Alice Mosley who, after several years, completed her final QK event by recording personal best (pb) in all four disciplines, and obtaining a pb in total points. Well done Alice!

For the older athletes, the main event was the county championships at Horspath track in May, where 12 athletes took part. There were 31 pbs in total, 6 club records (CR) broken, and gold medals won by Gracie Wilson (U17W 500gm javelin – 24.01m), Fleur Wilson (U15G 500gm javelin – 15.81m), Stanley Bradley (U13B 3kg shot 6.63m CR, later improved to 7.95m) and Abby Kirkman (U13G 70m hurdles 13.20). Abby also picked up silver in 400gm javelin (18.63m, improved later in the season to 24.69m CR) and a bronze in 2.72kg shot (6.79m, later improved to a CR 7.31m), whilst Stanley set a CR when taking bronze in 400gm javelin with 21.52m, and Gracie won a long jump bronze with 4.18m. Taylor Spink (U17M) won a silver and set a CR in 700gm javelin with 30.41m.

During the summer, other CRs set were Gracie (U17 100m 13.76), Fleur (U15G 100m 29.00) and Dora Twycross (U15G 300m 49.99) which broke a long-standing record set by Phoebe Coleman. Athletes not yet mentioned but who obtained PBs in multiple events were Livi Wilson, Leo Powell, Hazel Lydiatt, Ruby Jane, Grace Mosley and Alice Cavalier.

Abby's performance in hurdles and javelin saw her selected to represent Oxfordshire in an U13 southern inter-counties match at Walton-on-Thames. Hazel Lydiatt represented the county in discus. Stanley Bradley was also selected, but unfortunately

couldn't attend the event.

Several other CRs during the season to call out. Gracie (200m 29.60, long jump 4.47m), Alice Cavalier (200m 30.19), Dora (800m 2:40.24), and Abby (discus 18.76m) – Abby ended up with CRs for all three U13G throws. Her discus throw placed her top of the Oxfordshire rankings for the season.

The end of season will see awards presented for the athletes who trained the most and competed the most. The club delivered 106 training sessions in the year, and are grateful for all the volunteer committee members and helpers amongst the GM community and parents, to the coaches including our older athletes, and to the Shepherd Trust, Rec committee, and Le Manoir.

The club is now preparing for the cross-country season. We have capacity to take on new members, and you can find out about us on the village website: <https://www.great-milton.co.uk/community/great-milton-parish-council-18553/athletics/>

Great Milton Primary School Governor News Bites

“With love we flourish”

New pupils are settling in well and the 2024/25 school year is in full swing. In fact, by the time you read this half term will almost be upon us. It starts on Friday 25 October (as it is an Inset Day) with children back on Monday, 4 November.

For those who no longer have children at school but wish to follow and keep up with some of their activities we encourage you to follow on Instagram, [greatmilton2023](#). There you will see year groups are known by these owl names:

Reception Class: Elf Owls, Year 1: Tawny Owls, Year 2: Barn Owls Year 3: Snowy Owls Year 4: Boreal Owls Year 5: Eagle Owls Year 6: Hawk Owls

The school website is an excellent source of information about all things related to school greatmiltonschool.co.uk For example, there you can see the Pupil Digital Rights Charter. Next month's News Bites will expand a little on how we try to maintain online safety and what you at home can do too.

Both parents and carers as well as children have social activities to look forward to as term progresses. These include:

Wine Tasting 3 October at The Neighbours' Hall

Monsters Disco 7 November in the School Hall

Christmas Fair 6 December in the School Hall.

Great Milton Neighbours Club Outings

In July Club Members and others from the near locality learnt a lot about the origins of two significant mills based on the River Test in Hampshire. Some went to the Whitchurch Silk Mill, the oldest working silk mill in the country, which had its origins in the 19th Century. The site of Laverstoke Mill had a



history extending over 1000 years but in the last two centuries saw the production of bank notes before it became the Bombay Sapphire Gin Distillery in 2010. The picture shows some of the group looking at the futuristic Mediterranean and Tropical glasshouses where the different botanicals can be inspected.

October 16th is the date of the last outing of 2024. Richmond -upon-Thames is the destination for two very different attractions. The Poppy Factory marked its centenary in Richmond in 2022. Discover the story of the people behind the poppies in the charity's new visitor centre. Eel Pie Island is located on the Thames and its former hotel was famous for its role in the 60s music boom. The Museum celebrates not only this but the story of the boatyards and the creative community who lived there. The cost for the two attractions and coach journey has been fixed at £35

For full background details please contact Fred Cabbage (fred.cabbage@btinternet.com). (01844 279683) To comply with the attraction's requirements, the official booking deadline is 19th September but it still could be worth making an enquiry in first week of October to see if there are spare seats. Priority given to Club members but past experience indicates that there should be spare capacity for non-members on the 53 seater Plaistow coach. Local pick-up extends to Wheatley, Great Haseley, if required. Booking forms can be provided at the Club or by a 'phone request to Lynne Claydon on 01844 278142.

Ride & Stride – Churches R Us

For the past 18 or so years, on the second Saturday in September, initially enthusiastic members of the Gt Milton Cycling Association have set out to cycle to as many churches as possible in order to raise funds for the Oxfordshire Historic Churches Trust. 2024 was to be no exception.

Our cohort comprised Clare B-F, Helga, Tony & Jane Jefferis, Wendy Harbottle,

your correspondent, and an elderly representative of our Denton chapter, the recently electrified Allan Smith.

First stop was St Andrews, Wheatfield, a delightful little church set all by itself in the middle of a field and which used to be in the grounds of Wheatfield Manor, owned by the Spencer family. Sadly the main house burnt down in 1814, and now only the church and nearby stables and coach house remain.

Uneventful visits to the churches in Adwell, South Weston and Sydenham followed before we headed east to Chinnor. This was a disappointment. Although the main parish church, St Andrews, was impressive enough, sadly the Community and Methodist churches were both closed, despite being on the list of participating churches. Words will be had with the Ride & Stride organisers!

Thence to the church of the Blessed Virgin Mary at Crowell where, unbeknown to several of us, the former Gt Milton stalwarts, Dave and Jan Undery, are laid to rest. Apparently, Jan was a member of the Shirman family who are all buried there. The group paid its respects. After a brief detour to St Peter & St Paul, Aston Rowant, we knocked off St Margaret's at Lewknor before heading to the Old Leathern Bottle for much-needed sustenance.

At All Saints at Shirburn, Helga, the former Line Producer for *Morse and Endeavour*, reminded us of events from both series that were filmed there, including *Morse's* mother's burial, and people being blown up and battered to death with car starting handles.....

Desperate to shut Helga up, we moved swiftly on to St Mary's at Pyrton with its magnificent bell tower, and then the three churches in Watlington, interspersed with an impromptu, and we suspect unwelcome (!!), visit to see Nigel and Karen Brimacombe in their "new" abode behind St Leonard's. The Great Wall of China was built in less time than it has taken poor Nigel and Karen to get their house completed!

We then turned for home via St Nicholas at Britwell Salome and St Bartholomew's at Brightwell Baldwin. The lure of a refreshing pint at the Lord Nelson pub was almost too much for some, but in an unusual demonstration of willpower, the beer was eschewed, and we headed for St Mary's, Chalgrove (with its magnificent 13th century frescoes), Gt Haseley, and home.

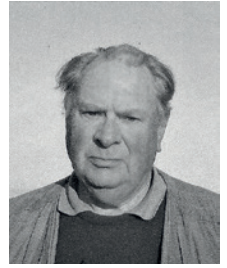
In all, the group cycled 38 miles and visited 20 churches, each with its own story to tell, in glorious sunshine, and raised the not inconsiderable sum of £480 (plus Gift Aid) for the preservation of these wonderful buildings.

My thanks to my colleagues for their forbearance, and to those of you who sponsored us – an uplifting day!

Bill Fox

View from Views

This summer the weather has been somewhat of a roller coaster, luckily for us in this little corner of our country we seem to have missed the worst of the wet, in fact I think we could probably have done with a little more rain. Although, as I write we could do with a little sunshine. Since I last wrote on how, perhaps some of the environmental initiatives we had been employing, had not been entirely successful, we have ploughed up 2/3's of our Lupins and planted it with Buckwheat and Phacelia, to give the land a little rest, and build up a little more condition in the soil, before we plant the next crop in the next few weeks, I notice that at the beginning of September the Black Grass is already showing again but, hopefully the pre-planting preparations will put paid to it, the other disappointing issue is that when the Clover area was also ploughed it showed no enhancement to soil condition, which we would have expected. Bare in mind that this clover was planted as a companion crop to do just that and, provide extra plant nutrients naturally, I am odd that this could be that as it was ploughed during a dry period the clover would continue to grow and thus sap up any moisture.



Nothing really to report on wild life at the moment all rather quiet plenty of birds about even still seeing the odd swift, we now seem to have a resident Tawny Owl who serenades us in the early hours of the morning. We have always have Skylarks everywhere on the farm, now I think they are being joined by Buntings. In conjunction with the “River Thame Conservation Trust” and the local farm cluster, we are participating in a drive to remove the Mink that have been released by some very irresponsible humans, to re-establish the native “Water Vole”, that have been pushed by the “Mink”. So far, here we have caught 4 and, within the cluster I think we have accounted up to 30 so far. So hopefully one day we will see the return of “Ratty” to the river banks, during this campaign it has become obvious to us that we also have otters present. I would like to thank those local volunteers who have been of great help in carrying out this operation.

Apart from the Poppies and the lupins, harvest was over by the last day of July, this sounds great, but that is only the Wheat and the Barley, which were completed in just over 2 afternoons. Due to the weather conditions that both the above crops had to endure what was left to cut preformed reasonably well. The Barley produced about 150 tonnes instead of a potential of 225, but what we cut was not that bad. The Wheat, which if you remember we tried sowing into an already established crop that

we later destroyed, gave us a yield just under what would be considered a good average, (whatever that maybe), although these results were more than we would have expected I doubt it will impress the bank manager. We do still have 2 unknown crops yet to harvest, plus some DEFRA payments for various other land use initiatives we have entered, I think this will illustrate that without our other income we would be in a very difficult situation, I fear for many of our colleagues, who may not survive.

I mention the Government initiatives above, we were just beginning to think that these essential means of support were being realistic to our needs and that they were being more flexible in the administration of the schemes, when suddenly we learn that our new Government are going to cut spending on Agriculture by £100m, a real kick in the teeth for us, many are somewhat apprehensive in applying for the many schemes that have been brought in to save nature.

Recently I received a card anonymously, which was great I like to hear from those who obviously read my little bit of nonsense, this was to do with the proposed idea of the “OXCAM” arc, well I can assure the writer that I am well aware of the proposal and am sure our new MP is if not I would be surprised, he would also aware of our feelings on the matter. However, he was part of the County Council that allowed the ridiculous Eynsham “Park & Ride” debacle to evolve. This is something that is desperately needed, surely a temporary measure can overcome this debacle, I think we should be demanding a solution “ASAP”, for goodness, sake Councils get a grip and sort it, it is ridiculous not too, verging on the criminal. (Thank goodness it does not affect us in this part of the county). A recent media report states that Oxford is too overcrowded as it is which, I find interesting. On the issue of the “P&R” it is a scandal and a waste of ratepayer’s (yours and my hard earned money), and at a time when it looks as if we are all going to have to tighten our belts.

Recently I read a very good letter written by some influential persons on “The Right to Roam”, as Great Milton will not have seen, (I had hoped it could have been included in the Bulletin, as it has been in Little Milton & Stadhampton). It illustrated in a very concise way what I have been talking about for many years, in that every step you make you are in effect killing something. If anyone is interested, please get in touch, I will see if I can forward it to you.

Charles Peers

Recreation Ground Committee

The Great Milton Rec Committee is delighted to announce that the newly renovated cricket net is now open and looking fantastic.

Special thanks to The Sheppard Trust for its generous funding support and to Nick Whiting for leading the charge on this project.



Tons Together (Little Milton) WI

We served tea & cake and sold some of my jam stock for the 75th GHDHS Horticultural Show on 24 August and raised an amazing £220.68 for our funds. Thank you to everyone who supported us with cakes, help and custom.

Thank you to Thea Rogers who stepped in at the last minute to teach us seated Zumba in September. We've also had to shuffle the rest of our meeting plans, so our Bollywood dance workshop has moved to 14 November and the 10 October meeting is now Alpacas & their fabulous fluff with Jane Abbott.

Everyone welcome, men too! Visitors £5, or join up for £24 (2024-25).

Do you live in Little Milton, Great Milton, The Haseleys, Stadhampton or surrounding villages, new to the area, want to meet new people, make new friends? Then join Tons Together WI and meet like-minded, local women of all ages in an informal, friendly group.

We meet every 2nd Thursday of the month in the Pine Lodge OX44 7PZ at 7.30pm
Too shy to come by yourself or need a lift? Contact us & we'll find you a WI buddy.

Like us at www.facebook.com/lmpinelodge

Pine Lodge website: www.lmvh.org.uk

Kath Stacey 01844-279438 tonstogetherwi@oxfordshirewi.co.uk

South Oxfordshire Christmas Fair

Raising Money For Sobell House Hospice And Watlington Nursing Home at The Oxfordshire, Tuesday 19th November 2024

The first South Oxfordshire Christmas Fair will take place on 19th November, at The Oxfordshire Golf Hotel and Spa near Thame, to benefit Sobell House Hospice and the Watlington Hospital Charitable Trust. The Fair's format will be the same as the popular Watlington Hospital Christmas Fair, which has attracted hundreds of people from all over Oxfordshire, Berkshire and Buckinghamshire for over 20 years. All that's changed is the name of the Fair and the addition of a second charity chosen to benefit from the funds raised: this year, it is Sobell House Hospice.

The fair is always growing, with over 50 carefully selected stalls, including exciting new independent businesses and many familiar favourites. This year, there's also expanded choices for lunch and coffee, and plenty of car parking.

Browse the stalls for Christmas gifts and be inspired by the range of products on show. From cashmere sweaters, beautiful stationery and vintage decorative finds to children's stocking fillers, bestselling books and home-made Christmas cakes, the Christmas Fair can help you do all your Christmas shopping under one roof – no parking hassles, some real Christmas good cheer and all done in mid-November!

With lots of small, rural businesses taking part, you are sure to find something to suit even your most difficult gift dilemma. Try handcrafted candles made in the Chilterns by Chapel House Candles, Spanish Olive Oil grown by Fino Olive Oils based in Oxford Henley Distillery's award-winning tipples or gifts for your fur babies from Hugo & Celine.

The Fair's firm favourites, such as Sarah Foreman selling fabulous faux flowers and plants, and So Souk, selling stylish artisan homeware and accessories from around the globe will be there alongside Auree Jewellery, Chuka Belts and Sophie's Ribbons. If you're looking for a wonderful, thoughtful gift, you're sure to find it at the Fair.

Morland House Surgery

Morland Close, Wheatley OX33 1DP

The usual surgery opening hours are Monday to Friday 8am to 6.30pm
Saturday mornings (excluding Bank Holiday weekends) 8am to 10.30am, for prebooked consultations only

Enhanced access hours are offered outside these times, please speak to one



of the reception team on 01865 872448 for more information. When the surgery is closed, please contact the Out of Hours service by phoning 111

Drink Coaches - Are you consuming too much alcohol? You can take the Alcohol Test – it's free, online, quick and confidential – taking just two minutes. Work out how risky your drinking is and access personalised advice online and find out where you can get support in Oxfordshire.

<https://www.morland-house.co.uk/drink-coach-take-the-test/>

Whooping Cough, a bacterial infection that affects the lungs, has been rising in many countries since December 2023. It is a cyclical disease and a peak year is long overdue. Vaccination in pregnancy and childhood are important for protection but both have fallen in recent years. It is treated by antibiotics. For more information on symptoms and treatment visit www.nhs.uk/conditions/whooping-cough/

The NHS launched the Pharmacy First Service (PFS) on 31st January (see NHS Pharmacy First Service (PFS) | NHSBSA) Appointments can be booked directly with participating pharmacies for the treatment of 7 common health conditions namely sinusitis, sore throat, earache, infected insect bite, impetigo, shingles, uncomplicated urinary tract infections in women. Pharmacists can offer advice to patients and supply NHS medicines where clinically appropriate. This will help reduce the pressure on Morland House Surgery. As an example, appointments with Wheatley Pharmacy can be booked (often the same day) by phoning

01865 874047 or via the website www.wheatleypharmacy.com/book

Group Consultation Clinics – A group clinic is currently being offered for the menopause and we are working on introducing clinics for a wider range of conditions. The benefits include a more thorough examination of your condition, having your questions answered, sharing issues with others going through the same issues, and spending longer with a GP.

Morland House Surgery Website For a wealth of information and guidance on managing a vast number of health conditions, symptoms, and treatment, please visit www.morland-house.co.uk The new updated MHS website went live in June. If you open the website home page and it still looks the same you will need to click the 'refresh' button.

Also on the website are details of how to access your medical records and test results.

Soldiers of Oxfordshire Museum

First World War Family Day for 110th anniversary of the start of the Great War

Visitors of all ages can immerse themselves in history with living history displays and interactive galleries

First World War-themed family workshops and craft activities

Pop-ups from other museums, historians and heritage organisations will help people find out more about the First World War and their own family history

Museum accepting donations of records and objects with local Great War stories

On Saturday 2nd November 2024 Soldiers of Oxfordshire Museum will host a First World War-themed family day from 12pm to 5pm. 2024 marks 110 years since the outbreak of the Great War, while the county military museum also celebrates 10 years since it first opened. The event aims to commemorate this and help families discover more about Oxfordshire's contribution to events that changed the world and the stories of local people caught up in them.

First World War activities will be open to all the family, with an illustration workshop focused on wartime animals, and an opportunity to make your own 'Princess Mary' tin, like those gifted to soldiers from Christmas 1914.

During the event, the museum's galleries will be open alongside a range of WW1 living history displays to help immerse visitors in the period. The Great War Society, Britain's longest-running First World War living history group, will portray soldiers from the county regiment (The Oxfordshire & Buckinghamshire Light Infantry) throughout different stages of the conflict. Those dropping in will also see interpretations of French soldiers from *Volontaires Etrangers*, offering a different perspective on the 'War to End All Wars'.

The museum's permanent displays cover some of the many different fronts on which the war was fought, from the western front to Mesopotamia (now Iraq), while a re-created trench dugout offers visitors a chance to walk through history, with equipment and clothing for families to handle and even try on.

Alongside living history, there will be opportunities to find out more about local and family history with a number of displays from other museums and heritage organisations, including the Western Front Association, Chipping Norton Museum, Soldiers of Gloucestershire Museum, and the Royal Army Chaplains' Museum.

Great War historian and author Helen Frost will also be attending, promoting her new book *Voices from the Great War: Women's Land Army*, with signed copies available, alongside a fascinating display of Land Girls' uniforms and photographs to 

help tell their often-overlooked First World War story.

Those with a family story from the First World War and objects to share will find museum staff and volunteers on hand to discuss these and accept donations to the museum's collections, preserving Oxfordshire's military heritage for future generations. The museum is particularly interested in objects from the First World War with a person or story associated with them that ties to the county itself, or one of the county's regiments, The Oxfordshire & Buckinghamshire Light Infantry or Oxfordshire Yeomanry.

During the First World War Family Day the museum will not charge its standard admission prices for entry, instead visitors will be encouraged to pay what they can as entry will be by donation. All proceeds will support the museum's 10th anniversary fundraising campaign, helping to ensure the museum can continue to look after and expand its collections while preserving and sharing Oxfordshire's military and wartime stories.

Blenheim Palace, just a short walk from Soldiers of Oxfordshire Museum, is kindly supporting this event, providing additional car parking for visitors on their site throughout.





Great Milton Freecycle Live

SATURDAY 19 OCTOBER

BRING STUFF - 9.30 - 10.00 am ONLY

MAIN DOORS OPEN TO TAKE STUFF AWAY & CAFE - 10.00 am

AT
THE PAVILION,
GREAT MILTON RECREATION GROUND

featuring
Pop up Cafe in aid of
Wheatley Acquisition Explorer's "Explorer Belt 2024"

Find us on Facebook



Give away & get stuff for free... reuse and
Freecycle

GREAT MILTON NEIGHBOURHOOD WATCH

LION “MESSAGE IN A BOTTLE” SCHEME

These bottles are designed to hold important information about you and your medical needs. In case of an emergency, ambulance crews know where to find your bottle and ensure you get the care you need.

The bottles are free and could save your life

All you need to do is complete the enclosed form, with details of your next of kin and any information about diagnoses, medication, allergies etc. Then pop the bottle in the shelf of your fridge door. You'll also find two green self-adhesive labels in the bottle. Put one on the inside of your front door and the other on the outside of your fridge.

Ambulance crews are trained to look for the green stickers

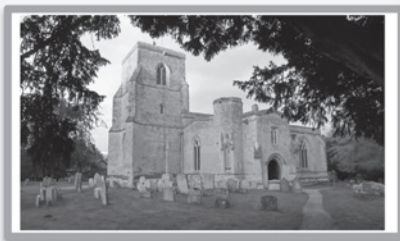
You can pick up your free bottle from:

Morland House Surgery
Health centres
Pharmacies

Or contact Rod Snowdon (Neighbourhood Watch)
on 07836 728919 or via the Village WhatsApp group.

It would be useful if you could let Rod know if you're using this scheme or if you find anywhere else that distributes the bottles.

Thank you.



St Mary's Church, an intrinsic part of the local community for over 900 years, invites *you* to discover more about its history and its unique features by connecting with the Info-Point inside the building. Anyone with a device containing a modern web browser can use Info-Point's Wi-Fi hotspot to gain free access to the content.

- ❖ Take the 11-point interactive tour around the building.
 - Learn about the unique organ.
 - Listen to the church bells.
 - Discover the mystery of the empty external niches.
 - Find out about the musical instruments which were once displayed (and now illustrated) near the south door.
- ❖ See a bird's-eye video of the historic building.
- ❖ The early 17th Century Dormer Monument, regarded as one of the most important monuments of its period in the county, has just been extensively restored.
 - Find out about the professional conservation work.
 - See photographs of the monument both before and after restoration.
 - Learn about the Dormer Family.

St Mary's Church is open every day with access via the North Door. Purchase a copy of the 'St Mary's and Great Milton' booklet (available in the church) for more comprehensive information about the Church and the Village.

How to connect to the Info-Point is clearly displayed inside the Church.




 The
 South
 Oxfordshire
CHRISTMAS
 FAIR

CHRISTMAS FAIR

Tuesday 19TH November 2024
 9.30am - 4pm
 The Oxfordshire Golf Club
 Off A329, Near Thame OX9 2PU

In Support of


Registered Charities No. 1138848



Registered Charities No. 1058167

www.southoxfordshirechristmasfair.com
Local 8 Refreshments
 Entrance £7.50

**Book & Jigsaw
Library**

Friday 25th October
 11am - 12 noon

The Neighbours' Hall



Borrow, swap, keep or return.
 Donations welcomed.

Join us on the third or fourth Friday of the month and enjoy tea,
 coffee and cakes in the Orchard Room while you browse.

Please feel free to make use of the Library whenever you visit
 the Neighbours' Hall

**The Three Villages
Car Service**

The Three Villages Car service exists to help people who are having difficulty in getting to their doctors' appointments.

If you have to get to your GP surgery or Thame Hospital for an appointment and need help getting there, give us a call and we will help if we can.

**Jane Jefferis – 01844 278743 or
 Wendy Richardson – 07763 800467.**

**Need a venue?
The Pavilion &
Recreation Ground**

**Ideal for children's parties,
 meetings, family get
 togethers, classes and
 lessons, corporate days and
 sports events.**

**Table and chair hire also
 available**

**For booking and more info,
 please email Caroline at
carolinesmith@2redroofs.com**

Neighbours' Hall

A large recently refurbished community Hall with Wifi, central heating, new lighting and well-equipped kitchen. The

Hall benefits from a bar, stage and smaller room opening on to an enclosed patio garden area overlooking Le Manoir orchard. The Hall has good car parking facilities. It is ideal for community groups, children's parties, family get togethers, company functions, weddings and special celebrations.

Available for hire by the hour or the day.

Cost for hiring

£15 per hour, £120 for the full day

Please contact our Booking Secretary

Janet Smith on 07970 264667

Great Milton Website

Have you seen the website?

<http://www.great-milton.co.uk/>

It is important to keep it up to date so please could you advise Chris Ashworth of any updates that need to be made (contact@clerkgreatmilton.co.uk)

Great Milton Post Office and Stores Opening Hours

	Shop	Post Office
Monday	8:00 – 5:30	9:00 – 5:30
Tuesday	8:00 – 5:30	9:00 – 5:30
Wednesday	8:00 – 1:00	9:00 – 12:30
Thursday	8:00 – 5:30	9:00 – 5:30
Friday	8:00 – 5:30	9:00 – 5:30
Saturday	8:00 – 12:30	9:00 – 12:30
Sunday	8:30 – 11:00	Closed

Bank Holidays – Closed All Day



Morland House Surgery, Morland Close, Wheatley OX33 1DP

The usual surgery opening hours are Monday to Friday 8am to 6.30pm

Saturday mornings (excluding Bank Holiday weekends) 8am to 10.30am, for **prebooked** consultations only

We also offer Enhanced Access hours outside of these times, please speak to one of our reception team on 01865 872448 for more information.

Dispensary:

Note that our dispensary closed permanently on Friday 29 September 2023

There is no change to the process of ordering your repeat prescriptions.

Please visit www.morland-house.co.uk for lots more information

When the surgery is closed, please contact the Out of Hours service by phoning 111

BULLETIN ADVERTISING

**1/4 page (w62mm x h90mm)
£5 or £50 per year**

**1/2 page (w128mm x h90mm)
£10 or £100 per year**

**Full page (w128mm x h185mm)
£20 or £200 per year**

**Full back page colour
£35 or £350 per year**

Adverts for community or fund-raising events can have quarter page free. Larger sizes are charged at half the normal rate.

**Please contact Alan Pickett
Tel: 07840 762271**

Email: contact@clerkgreatmilton.co.uk

GT Cars

**Your Local Private Hire
& Taxi Service**
(Formerly Courtesy Cars)



01865 343575

Email: gtcars36@gmail.com


**Local & Long Distance Travel
Airports/Seaports
London City**

Credit Card payments accepted in all vehicles


Talking Heads from Lassco



Photography for portraits and family events. For more visit www.nickbelcherphotography.co.uk



**Waterperry
Gardens**



**Gardens, Teashop, Plant Centre,
Play Area, Orchards, Museum,
Art Gallery, Courses**

Open All Year Round
Waterperry Gardens, Nr Wheatley,
Oxford. OX33 1LA. T. 01844 339226.
www.waterperrygardens.co.uk

Apple Weekend

Sat 12 & Sun 13 Oct, 10am till 5pm

A great family day out where you will be able to sample and buy many of our different types of juices. Advice and information on growing, planting, apple identification and selecting trees and rootstock will be freely available on the day. Buy goodies at the craft and food fair, take a tour of the orchards & fruit sheds including a behind-the-scenes visit to see our apple press in action (tours £4 per adult or free with garden entrance and for season ticket holders). Not forgetting the Tea Shop will be offering a fruity menu all weekend so be sure to visit whilst you're here!

Waterperry Spooky Halloween Hunt

26 Oct - 3 Nov

Take part in the Waterperry Spooky Halloween Hunt throughout the October half term. £3.95 per child with a prize (children must be accompanied by an adult for whom the garden entrance fee applies). Open daily from 10am till 5.30pm (5pm Nov).

DIARY DATES

**Waterperry Christmas Markets Sat 23 & Sun 24
Nov and Sat 7 & Sun 8 Dec / Come & meet REAL
Reindeer Sat 23 & Sun 24 Nov - 11.30am till 2.30pm
Find Santa's Reindeer Trail 23 Nov till the 24 Dec**



ABC Gas and Plumbing Limited

Your local gas safe registered engineer

Boiler installations * Power flushing * Leaks *
Servicing * Domestic plumbing * Gas safety
checks * Renewables * Taps * Radiators

24 hour
emergency
call out

**Voted Plumbing & Heating
engineer of the year 2023**



Mobile: 07894466025 or 07849116805

Email: ABCGasandPM@gmail.com

Website: www.ABCGasandPlumbing.co.uk

Landline: 01865 368731

40 Elm Drive, Garsington, OX44 9AQ



SOUTH OXFORD BUILDING SERVICES LTD

YOUR LOCAL BUILDER

EXTENSIONS | RENOVATIONS

LISTED BUILDINGS

CONTACT US

01844 278100

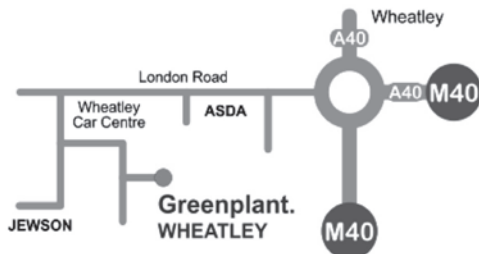
www.southoxfordbuildingservices.com

Greenplant.

Your First Choice for Plant and Tool Hire.
Quality Equipment, Competitive Prices, Unbeatable Customer
Service, On Your Doorstep!

Where to find us...

Unit 1 London Road
Wheatley
Oxford
OX33 1JH



- ✓ Access Equipment
- ✓ Air Tools
- ✓ Bowers
- ✓ Breakers
- ✓ Cleaning
- ✓ Compaction
- ✓ Concrete Equipment
- ✓ Containers and Stores
- ✓ Cutting and Grinding
- ✓ Decorating
- ✓ Diamond Blades and Cores
- ✓ Drills
- ✓ Dumpers
- ✓ Events
- ✓ Excavators
- ✓ Fixing
- ✓ Floating Plant
- ✓ Forklifts and Telehandlers
- ✓ Gardening
- ✓ Heating and Cooling
- ✓ Lifting
- ✓ Lighting
- ✓ Piling
- ✓ Plumbing
- ✓ Pumps
- ✓ Sanding
- ✓ Survey and Measuring Equipment
- ✓ Trailers
- ✓ Welding
- ✓ Generators
- ✓ Woodworking Equipment



Scan the QR Code to view our catalogue,
or visit www.greenplant.ltd.uk

mail@greenplant.ltd.uk

Call 01865 876 000



MSM Electrical

- Full Rewires
- Extensions
- Extra Sockets & Lights
- Garden Lighting & Power
- Electrical Vehicle Charging Points
- Small Jobs Welcome



REGISTERED PART P
LANDLORDS CERTIFICATES

Contact Martin Shaw: 07860 795 605 / 01865 872681
msmelectrical61@gmail.com



A D OUSLEY



Domestic & Commercial ELECTRICIAN

All types of electrical installation work
including test and inspection and certification

Tel: Adam on 01844 339793 Worminghall
or 07976 352293 (8:00am – 5:30pm)

Email: adousley01865@gmail.com

*Registered member of the
ECA and NIC EIC*



Wheatley Painters

Interior & Exterior painting and home repairs.

If it has a surface, then we can paint it!

Info@wheatleypainter.co.uk

Free quote next working day!

07456816763

www.wheatleypainter.co.uk

A trusted locally-based family business, providing painting and decorating, as well as home-repair services, plastering, refurbishment and silicone rendering, to customers across Oxfordshire.



We are a unisex hair salon offering the latest in hair styling & Design, which has been trading for 20 years. The family run salon has recently relocated to Great Milton, and is loving being back in our home village.

Our friendly and helpful team will help you achieve the look you are after, with the minimum of fuss, so that your time spent with us is a relaxing experience.

Please call us to book an appointment, or discuss your requirements, and we will be more than happy to help you in any way possible.

Tel: 01844279503 or 07760252486

Email: sistersedge@btinternet.com

Web Page: sisters-edge.co.uk or sistersedge.co.uk

Lynday, Thame Road, Great Milton. OX44 7NY

LOOKING FOR THE RIGHT PLACE FOR YOUR BUSINESS?

Where people and the planet matter.



Serviced Offices | Business Units | Meeting Rooms | Hot Desks | Virtual Support



Monument Park, Chalgrove OX44 7RW
01865 893200 | hello@jennings.co.uk | jennings.co.uk



Wheatley Dental Practice 01865 873314

We are currently accepting new patients at our friendly local dental surgery.
Please phone our receptionists or call in for more details!
Tooth whitening and facial aesthetic treatments available.

Catherine Peers BDS, Claudia Conde MClintDent Lond.
Dental Surgeons

Rachel Hyde RDH, Julie Davies
Dental Hygienists

96 Church Road, Wheatley, OX33 1LZ
wheatleydental@gmail.com

REALLY SHARP

KITCHEN KNIFE AND GARDEN TOOL SHARPENING SPECIALIST

KITCHEN KNIVES

SHORT KNIFE (UP TO 5" OR 125MM)

LONG KNIFE (OVER 5" OR 125MM)

MEAT CLEAVER

GARDEN TOOLS

GARDEN SHEARS

SECATEURS

HALF-MOON EDGING IRON

HOE

CHAIN-SAW CHAINS

HEDGE CUTTERS

AND MUCH MORE....

EMAIL CHRIS@COOPERS-COTTAGE.COM FOR A PRICE LIST.

SANDY LANE FARM

Local. Seasonal. Organic.

Est. 1985.

Sandy Lane, Tiddington OX9 2LA



Organic veg box delivery, farm shop & coffee bar

Thursday & Friday 10:00 - 16:30 / Saturday 10:00 - 14.30

For all info visit @sandylanefarm

www.sandylanefarm.co.uk

Private **CLEANING**
OXFORDSHIRE

- ✓ 14+ years of experience
- ✓ Family-run local business
- ✓ Fully trained in Health & Safety and COSHH
- ✓ 4.9 rating on Google (out of 69 reviews)
- ✓ Your neighbours' favourite cleaners



CALL NOW !

 01865 58 08 79;  07411 606 609

www.privatecleaningoxfordshire.co.uk

Graham Blake
soft furnishing

- Loose covers
- Curtains
- Re-Upholstery
- Tracks & Poles

TEN YEAR GUARANTEE

For personal, helpful service
please call

Tel: 01844 261769

Mob: 07802 213381

grahamblake123@btconnect.com

www.grahamblake.com

ASHURST ARCHIVES

STORAGE

- Archive and Documents
- General Household
- Car
- Boat
- Caravan
- Business
- Short or long term

**HOLLANDS FARM
GREAT MILTON**

jonnie@hollandsfarm.com
07768 408389

M.R.F.
LIMITED

Window Cleaning Services

M. FRY

**Domestic & Commercial Window
Cleaning & Gutter Maintenance**

Fully Insured

**Member of the Federation of
Master Window Cleaners**

1 LONDON ROAD, WHEATLEY, OXFORD OX33 1YW

E: michael.fry4@btopenworld.com

MOBILE: 07887 515168



TIDDINGTON
GARAGE

Electric & Hybrid Specialists

Servicing & Repairs

MOT Testing incl. While You Wait

Up to Dealer Level Diagnostics

Air-Conditioning On All Vehicles

Clutches incl. DSG

Tyres, Brakes & Tracking

Free Courtesy Cars & Collections*

Oxford Road, Tiddington, Oxon, OX92LH

01844 339210

www.tiddingtongarage.co.uk



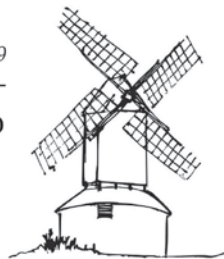
**subject to T&C's*

GoodGarageScheme.com
Registered Member



Windmill Windows

Est 1999



www.windmillwindows.com / Tel: 01844 237070

"Windmill Windows is a local family run business established in 1999, supplying and installing a large range of products in all materials, including uPVC, Composite, Timber and Aluminium.

Please feel free to pop in to see us, call us or visit our website for any information you are after. All our quotes are free of charge and obligation free."

Address:

Unit 1,
68 Worminghall Rd
Oakley, Bucks
HP18 9QY



Products:

- *Windows
- *Doors
- *Bi-Folds & Patio Sliders
- *Conservatories
- *Fascia / Soffit & Guttering
- *Glazing

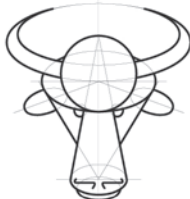


MOSSINATOR®
ROOF CLEANING SYSTEMS

Moss Removal & Roof Cleaning
Patio & Driveway Cleaning
Render & Brickwork Cleaning
Solar Panel & Skylight Cleaning
Installation of Bird Protection
Chimney Cowl Installation



Enhance the appearance of your property
with our quality assured friendly service
info@mossinator.co.uk - 01865 362797



J.M. DUDLEY
GRAPHIC SERVICES

Artwork Creation
Photo Retouching
Colour Printing
Photocopying
Scanning

01844 279761 07721 457035
JONNY@ORODRUI.CO.UK

Diary

- Monday Spark Yoga – The Neighbours Hall. 9:15am
contact Claire – sparkyoga1111@gmail.com to book or for more details
Arts & Crafts Club – The Pavilion. 1st Monday of each month. 6:30 – 9:00pm
contact carina.martin@gmail.com
- Tuesday Athletics Club. Year 8+. 6:00–7:30pm. Horspath Sports & Athletics Ground.
enquiries.gmac@gmail.com
- Wednesday 2nd Wed: Coffee Morning at The Methodist Chapel. 10:00am – Midday
Fitness & Yoga – The Neighbours Hall. 6:00pm – 7:15pm
contact Yvonne – y.cartwright@btinternet.com
- Thursday The Neighbours Club. Alternate Thursdays. *contact Janet Earl – 01844 279432*
Sandy Lane Farm Market. 10:00am – 5:30pm.
contact Sandy Lane Farm – 01844 279269 www.sandylanefarm.net
Athletics Club. Year 4–7. 6:00–7:30pm. Horspath Sports & Athletics Ground.
enquiries.gmac@gmail.com
Badminton – Great Milton School Hall. 7:00pm – 10:00pm
contact Daphne Holland – 01844 214198
Bellringers – St. Mary’s Church Tower. 7:30pm – 9:00pm
contact Pat Cox – 01844 279300. www.gm-bellringers.freeuk.com
- Friday Vinyasa Flow Yoga – The Neighbours Hall. 9:15am
contact Claire – sparkyoga1111@gmail.com to book or for more details
Sandy Lane Farm Market. 10:00am – 5:30pm. *contact: see Thursday*
- Saturday Old Field: 2nd Saturday of each month. 10:15am – 12:00pm.
Contact Alex Kirkman – 01844 278090
Sandy Lane Farm Market. 10:00am – 2:00pm. *contact: see Thursday*

October

12th Sat	Barn Sale at Highway House Barn, Great Haseley	10:30am
13th Sun	Bring & Share Lunch at The Pine Lodge, Little Milton	12:30pm
16th Wed	Neighbours’ Club Outing to The Poppy Factory & Eel Pie Island	—
19th Sat	Autumn Clearance at St. Mary’s Churchyard	10:00am
	Freecycle at The Pavilion	10:00am
21st Mon	Parish Council Meeting at The Pavilion	7:30pm
25th Fri	Book & Jigsaw Library at The Neighbours’ Hall	11:00am

All copy (except adverts) to gmbulletin@hotmail.co.uk by **20th October 2024**.

Sheppard Cottage, Lychgate Lane, Great Milton, Oxford OX44 7PB.

Adverts to **Alan Pickett** 07840 762271.

contact@clerkgreatmilton.co.uk

The views expressed in this bulletin are not necessarily those of the Editor nor of the Parish Council.
The Editor reserves the right not to print items submitted for publication, and to edit those which are published.



Volunteers Needed to Spread the Joy of Reading in Oxfordshire

Children's literacy charity **Schoolreaders** is looking for more volunteers who can help spread the joy of reading to children in primary schools across Oxfordshire.

Every year, 1 in 4 children leave primary school unable to read to the expected standard.

Schoolreaders recruits volunteers to listen to children read one-to-one in primary schools, focusing on schools where children require the most support. Volunteers are asked to listen to children read once a week in term time and to commit to a minimum of a year.

Please visit the website www.schoolreaders.org to join or call 01234 924111 for further information.