

# GREAT MILTON BULLETIN

December 2024

Published by the Parish Council

No. 603



## Freedom of Information Act – Parish Council Publication Scheme

The Freedom of Information Act 2000 provides rights of public access to information held by Public Authorities. The Parish Council adopted a new publication scheme in November 2019: details can be found on the Parish Council Website at <https://www.great-milton.co.uk/freedom-of-information/>. Residents can see records of the policies and practices of the Parish Council including minutes, financial information and responses to planning consultations, on request from the Parish Clerk or via the website.

## Great Milton Parish Council

<b>Chairman:</b>	<b>Stephen Harrod</b>	<b>01844 278068</b>
Ward:	Church Road to Monkey Farm/The Priory	
<b>Vice Chairman:</b>	<b>Bill Fox</b>	<b>01844 279716</b>
Ward:	Thame Road, inc Fullers Field and Green Hitchings	
<b>Councillor:</b>	<b>David Harms</b>	
Ward:	The Green from Priory Bank to Tara/Applewood	
<b>Councillor:</b>	—	—
Ward:	The Old Garage to North End Cottage, Lower End	
<b>Councillor:</b>	<b>Sarah MacMahon</b>	<b>07580 581655</b>
Ward:	Thame Road from Green Hitchings to A329	
<b>Councillor:</b>	<b>Malcolm Horsley</b>	<b>07970 924194</b>
Ward:	Kings Head House/Red Roofs to Wheatley Boundary	
<b>Councillor:</b>	<b>Andrew Noble</b>	—
Ward:	Milton Common	

**Locum Clerk/Responsible Financial Officer: Allison Leigh**  
[parishclerk@greatmilton-pc.gov.uk](mailto:parishclerk@greatmilton-pc.gov.uk)

## Parish Council Representatives

Rec Ground Committee:	James Cunningham (Chair), Michele Block (Vice-Chair)
Old Field Charity:	Adrian Buckmaster (Chair), David Mackrory (Treasurer)
Hard Surface Play Area:	Mark Nethercleft (Chair), Dan Bennett (Treasurer), Sarah MacMahon (Membership)
Neighbourhood Watch:	Rod Snowdon
Kent & Couling Charity:	Simon Cronk, Tricia Treanor, Sue Denham
Sheppard Trust:	Simon Cronk, Jane Willis
Neighbours' Hall:	Mike Robinson (Chair), Christine Donnelly

**Front Cover:** Snow on The Green 2021.

**Photo:** Manny Stone.

## Key Contacts:

### Local Governance

Oxfordshire County Council	01865 792422	Oxfordshire.gov.uk
South Oxfordshire District Council	01235 422422	Southoxon.gov.uk
County Councillor: Freddie Van Mierlo	07944 492438	freddie.vanmierlo@oxfordshire.gov.uk
District Councillor: Georgina Heritage	07951 477144	Georgina.Heritage@southoxon.gov.uk
Great Milton Parish Council	01844 278068	parishclerk@greatmilton-pc.gov.uk
Stephen Harrod (Chair)	—	Fixmystreet.com
Allison Leigh (Locum Clerk)	—	—
Report potholes, fly-tipping, vandalism, broken paving	—	—
OCC Family Information Service	08452 262636	fis.enquiries@oxfordshire.gov.uk
OCC Highways	0845 310 1111	highway.enquiries@oxfordshire.gov.uk
Missed Bin Collection	03000 610610	admin.southoxford@biffa.co.uk
Bulky Household Waste Collection	01235 422406	waste.team@southandvale.gov.uk
SODC Housing	01235 422422	housing@southandvale.gov.uk
SODC Planning Applications	01235 422600	planning@southoxon.gov.uk

### Services

Emergency - Police, Fire, Ambulance	999	—
Police non-emergency	101	thamesvalley.police.uk
GP Surgery, Morland House	01865 872448	morland-house.co.uk
NHS non-emergency	111	nhs.uk
Gas Emergency	0800 111 999	nationalgrid.com/uk/safety/
Electricity Outage	0800 072 7282	sse.co.uk
Burst pipe or leak	0800 714 614	thameswater.co.uk
Floodline	0345 988 1188	gov.uk/check-flood-risk

### Local information

St. Mary's Church: Rev. Simon Cronk	—	simon.cronk@btinternet.com
Methodist Church: Rev. Stephen Spain	01865 763676	—
Neighbourhood Watch: Rod Snowdon	07836 728919	bigsnodi@hotmail.co.uk
Citizens Advice Oxfordshire	03444 111 444	caox.org.uk
The Maple Tree Children's Centre	01865 873916	mapletreecc@oxfordshire.gov.uk
Great Milton Neighbours Hall	07970 264667	—
Great Milton Pavilion & Recreation Ground	01844 278116	—
Great Milton Website	—	contact@clerkgreatmilton.co.uk http://www.greatmilton.co.uk
Great Milton Bulletin	01844 278347	contact@clerkgreatmilton.co.uk gmbulletin@hotmail.co.uk
Great Milton Primary School	01844 279388	gmilton.org
Wheatley Park School	01865 872441	www.wheatleypark.org

### Transport

Comet - for people without access to suitable public transport	01865 323201	oxfordshire.gov.uk/comet
46 Bus Service	01865 785400	info@oxfordbus.co.uk
Arriva (280) Bus	0344 800 4411	arrivabus.co.uk
Oxford Tube (Buses to London)	01865 772250	oxfordtube.com
Park & Ride	—	oxfordshire.gov.uk/cms/public-site/parkandride
National Rail Enquiries	03457 484950	nationalrail.co.uk

## **Parish Council News**

Present: B Fox (Vice-chair), M Horsley (MH), D Harms (DH) and A Noble (AN)  
In attendance: Allison Leigh (Locum Clerk), and two members of the public.

### **Apologies for Absence**

Stephen Harrod (Chair), Councillor Sarah MacMahon, Cllr Georgina Heritage (SODC)

### **Variation of order of business**

The Council resolved to move item 139/24 further up the Agenda.

### **Declarations of members' interest (if any)**

None

### **Reports**

South Oxfordshire District Council (SODC)

The District Councillor sent a report. See Attachment 1.

There were no other reports.

Correspondence and Public Discussion

There was no correspondence to note. Two members of the public were in attendance one of whom was the Neighbourhood Watch coordinator.

### **Minutes of the previous meeting**

The minutes of the meeting of the Parish Council held on 22nd October 2024 were agreed and signed.

### **Actions from the previous meeting:**

DH reported that there is no update on the South and Vale Local Plan other than to note that the working group is ensuring they are up to date in submitting all necessary responses.

DH reported he is working on setting up a meeting regarding school parking. The meeting will most likely take place in during December.

### **Security in the village:**

The Neighbourhood Watch coordinator was in attendance. He noted the issue at the Manoir, which was noted at the October meeting, regarding stolen apples and a beehive. He also noted that there have been people ringing doorbells and running off, but there has not been a need to involve the police.

### **Planning Applications:**

A: Planning Amendments: The Council considered the following planning applications:

Mount Pleasant Farm, Thame Road, Great Milton

The amendment is for additional BNG information received 16th October 2024

This application has been withdrawn.

Road Maintenance Depot London Road Milton Common OX9 2JN

Major Amendment : No. 3 - dated 4th November 2024

Proposal : The erection of a single storey office block, maintenance garages and salt barn at the western end of the existing depot site, and the creation of new access and SUDS pond. (As amplified by additional information received 6 October 2022 and amended by Plans and information received 31 March 2023 including revised site location plan and as amended and amplified by information received 04 November 2024).

The Council has no further comments on this planning application.

B: Planning Decisions: The Council noted the following planning decisions:

The Old Vicarage, Church Road, Great Milton

Rebuild existing external garden wall to same length as it currently stands and to a consistent height matching original height of wall

Permission granted.

Milton Pools Fishery near Milton Common

Erection of 2 x extensions to main building (Units 2 and 4); erection of building (Unit 3)

SODC determined the above application is lawful.

C: Waterstock Planning Appeal: The Council agreed to support Waterstock Parish Council in their opposition to the Appeal by developers seeking to redevelop the golf course. The Council resolved to make a contribution of £500 towards their Appeal costs.

D: Oxfordshire County Council Planning Reference LL.0119/24: The Council resolved not to consider a response to the consultation.

## **Finances**

The Council agreed and the Vice Chair signed the monthly bank reconciliation, accounts and bank statements

Donation requests: The Council considered the following donation requests:

i. Freecycle: AN confirmed that the Sheppard Trust have funded pavilion hire costs for Freecycle in the past. AN to liaise with Miranda Cook and suggest she approaches Jane Willis of the Sheppard Trust in the first instance.

ii. The Howe Trust Christmas Hamper Campaign: The Council resolved to donate £100 to the Howe Trust Christmas Hamper Campaign.

Local Government Services Pay Agreement 2024/25: The Council noted the 2024/2025 increase backdated to 1/4/24.

2025/2026 Budget: The Council considered the draft 2025/2026 and



made a few edits. The Council would like this on the December agenda.

Unity Trust Bank: The Council resolved to switch banks to Unity Trust Bank using online banking. The Council resolved the following as signatories:

Stephen Harrod, Bill Fox and Andy Noble.

The Council resolved for the Locum Clerk, Allison Leigh, to be the account administrator.

### **Switchover to .gov.uk domain (emails and website)**

The Council resolved for the email addresses to be first.last@greatmilton-pc.gov.uk. The Clerk will work with Parish Online to set these up. The Council considered the switch over date to the new website. MH will look at both sites for consideration.

### **Grounds maintenance contract**

The Council considered the post-trial arrangement with Tactical Facilities Management. The Council have a signed contract with Tactical Facilities Management for the provision of grass cutting services through until February 2026, subject to 3 months' notice to terminate by either party at any time. The Council would like to set up a meeting with Tactical Facilities Management to discuss the service received this Summer. The Vice Chair will arrange to meet with the Director and any councillors who would like to attend.

A member of the public noted that, in some places, the verges are cut too short to the point where the soil is exposed.

The Council considered obtaining a quote from another contractor for the grass cutting works for its grass maintenance needs. The Clerk advised delaying seeking quotes until after the meeting with Tactical Facilities Management. The Council resolved to proceed with obtaining quotes.

### **Oxfordshire County Council Bus Data Capture Exercise**

The Council considered the exercise and resolved not to respond. However, the Council would like for OCC to inform GMPC if a parishioner chooses to participate.

### **Plans for redevelopment of Le Manoir Aux Quat'Saisons**

There is no update, but the Chair is meeting with them in November.

### **The Bulletin**

The Clerk is working with the editor to obtain more clarity about the process.

### **Items for next agenda or information only**

It was noted that the carol service will take place at 6pm on Wednesday the 18th December on the Green, with mulled wine and mince pies at the Bull afterwards. DH/MH to liaise re tree purchase with a maximum budget of £250.

### **2024/2024 Internal Audit**

The Council considered quotes for the 2024/2025 audit and resolved to proceed

with Jane Olds.

The next meeting of Great Milton Parish Council will be held on Monday 16th December starting at 7.30pm in The Pavilion.

The meeting closed at 8:30pm

## **District Councillor Report**

Haseley Brook ward

07 November 2024

Cllr Georgina Heritage

## **Meetings and Council Activity**

On 24th October a full council meeting saw members vote in favour of Neighbourhood Development Plans for four South Oxon villages (which I was pleased to propose to council on behalf of the Cabinet Member for Planning), and council also resolved four motions.

Perhaps the most impassioned and unifying motion of the evening was the vote of no confidence in Thames Water, with councillors of all parties unanimously calling for the water provider to be brought back under public control. Council members highlighted widespread concerns over Thames Water's environmental and financial mismanagement and their inability to meet key operational standards affecting residents and local ecosystems.

The motion emphasised the need for government intervention through the Water Industry Act 1991, which allows companies to be placed into Special Administration when they are in financial distress or fail to meet essential duties.

So far in 2024, untreated sewage has been discharged into the River Thames or its tributaries from sewage treatment works operated by Thames Water for more than 15,500 hours. This pollution is symptomatic of deeper issues within the company, with nearly two-thirds of Thames Water's sewage treatment facilities reportedly out of compliance with regulatory permits. Beyond pollution concerns, Thames Water's infrastructure challenges are also significant. The company loses about a quarter of the region's public drinking water supply due to its leaks. It is also struggling to manage an £18 billion debt that has led credit agencies Standard & Poor's and Moody's to downgrade Thames Water's debt rating to "junk" status.

The council's motion specifically calls on the government to end water industry privatisation, citing it as a "failed experiment" that has led to increased financial and environmental risks.

In addition to calling for Thames Water to be brought back under public



ownership, SODC is backing amendments to the Water (Special Measures) Bill, now progressing through Parliament. These amendments include:

Halting any public bailouts for the water industry as proposed under Section 10 of the Bill;

Restructuring Ofwat's duties to prioritise public and environmental interests;

Re-democratising water company boards to include employees, bill payers, and council representatives.

The council also resolved a motion on supporting communities in their efforts to retain pubs; a motion on the need for an urgent review of local government funding; and a motion on the importance of local government in delivering Net Zero.

### **Councillor Grant Scheme**

We want to benefit residents with fantastic community projects through the councillor grant scheme, so please don't forget applications close at midday on the 29 November 2024, and please share this information with any community groups which might benefit. The Haseley Brook pot is currently under subscribed! For more information please don't hesitate to get in touch, and you can find details via the SODC website: Councillor Community Grant Scheme 2024/25 - open - South Oxfordshire District Council

### **Proposed changes to Council Tax premium on long term empty properties**

South Oxfordshire and Vale of White Horse district councils have launched a public survey on proposals to reduce the minimum timeframe to charge a council tax premium on long-term empty properties.

Currently, the councils allow a maximum duration of up to two years for a domestic property to remain unoccupied and substantially unfurnished before an additional, long-term empty council tax 'premium' charge is incurred, on top of the normal full 100 per cent charge. Recent changes in council tax legislation now allow councils to reduce this minimum timeframe from two years to just one year. If this change is adopted, a new policy on long-term empty properties would come into effect from 1 April 2026 – to allow sufficient time for empty property owners to plan or adjust their plans accordingly.

The long-term aim of the proposal is to see as many homes brought back into use as soon as possible.

Residents can have their say via the online survey: Proposed changes to the additional Council Tax charge for long-term empty properties - South Oxfordshire District Council - Join the conversation - South Oxfordshire & Vale of White Horse - Citizen Space

This survey is open for six weeks and will close at 11.59pm on Tuesday 26 November.

## **First Habitat Bank created in South Oxon**

South Oxfordshire District Council is proud to announce it has helped create the first habitat bank in the district aiming to increase biodiversity and reduce river pollution while also allowing necessary development.

The council has worked with the environmental charity Trust for Oxfordshire's Environment (TOE) and a local landowner on plans to transform 16.5 acres off Windmill Lane, Towersey from intensively farmed arable land to a biodiverse mosaic of grassland, scrub, and woodland habitats. This will provide a haven for pollinators such as bees and butterflies, mammals including water voles and birds such as curlews and barn owls. 3

The new habitat bank will provide a stable income for the landowner through biodiversity net gain, making the rest of their farm business more resilient in the face of a changing climate.

The owner of the land at Towersey first heard about biodiversity net gain – where developers buy biodiversity credits from habitat banks to offset building works – when they attended the farm innovation show in 2022. They then worked with TOE to develop the project and liaise with the council as the local planning authority.

The site is next to the Thame Valley Conservation Target Area, a strategically valuable area for nature recovery. Over the coming decades, the land will be managed to allow wildflowers to bloom and set seed in the summer, with an annual hay cut in the autumn. This will create habitat and food for a host of wildlife species in an arable-dominated landscape.

By removing the land from intensive agricultural production, fewer chemicals from pesticides and fertiliser and less sediment will run into the Cuttle Brook that runs on the northern border of the site, improving the health of one of the River Thame's main tributaries.

## Benefice Services for December

	<b>St. Mary the Virgin Great Milton</b>	<b>St. James's Little Milton</b>	<b>St. Peter's Great Haseley</b>
Sunday 1st		Holy Communion 9:00am	Family Worship 10:30am
Sunday 8th	Holy Communion 9:00am	Family Worship 10:30am	
Sunday 15th	Family Service 10:30am		Holy Communion 9:00am Carol Service 4:00pm
Wednesday 18th (suggested)	Carols Around the Tree 6:00pm	Holy Communion BCP 9:00am	
Saturday 21st	Animal Nativity Service, Field farm, Thame 10:30am		
Sunday 22nd	Carol Service 4:00pm	Carol Service 6:00pm	Holy Communion BCP 10:30am
Tuesday 24th	Crib Service 4:00pm	Midnight Mass 11:15pm	
Wednesday 25th			Christmas Day Holy Communion 10:00am
Sunday 29th			Benefice Holy Communion 10:30am

## Benefice Services for January 2025

	<b>St. Mary the Virgin Great Milton</b>	<b>St. James's Little Milton</b>	<b>St. Peter's Great Haseley</b>
Sunday 5th		Holy Communion 9:00am	Family Worship 10:30am

## The Rector's Pint

One of the things I look for in a decent hymn is not only a good tune, which always matters, but also for the words to have meaning and provide some good insight and teaching. The same is true of Christmas carols. As I write, it is early November, but I have already begun to plan for Christmas - and of course, our carol services.


Words matter. For instance, one of the most cherished and popular of our carols is 'Away in a Manger', yet I balk at the line "The cattle are lowing, the baby awakes, But little Lord Jesus, no crying he makes". Might I suggest that the first thing a tiny baby, woken by bellowing cattle might do is fill his tiny lungs and bellow back? It paints a doubtful picture that as the perfect baby, Jesus apparently didn't cry. I'm sorry if I tread on sacred ground, but what nonsense! Of course, we will still sing the carol, if only because our children love it so much.

There is one carol however, that I think stands out. One verse in particular is as powerful and relevant to our times as it has always been. The carol is 'It Came Upon the Midnight Clear', and especially the third verse:

*Yet, with the woes of sin and strife,  
The World has suffered long;  
Beneath the angels' strain have rolled  
Two thousand years of wrong;  
And man, at war with man, hears not  
The love-song which they bring;  
Oh, hush the noise, ye men of strife,  
And hear the angels sing*

How pertinent is that? This has been a year of continued strife and deep unrest, and we have had the reality confirmed to us that human society is precarious, unpredictable, and potentially very brutal.

This was precisely the nature of the world that Jesus was born into. If we believe, as I do, that this is the eternal God, incarnate in, and as, a human (and one who would surely have cried as a baby when shocked into wakefulness by lowing cattle!) then, when we look to him, we see the source of our hope in a world which so often seems to be without hope.

At our carol services, as well as singing much-loved hymns, we will hear the great biblical texts that tell us of God's salvation plan in human society. The final reading - the Prologue from St John, with those wonderful words "The light shines in 

the darkness, and the darkness did not overcome it” acts as a crescendo.

I have long loved the saying ‘It is better to light a candle than curse the darkness’. It has been attributed to many people, but my research has also led to a sermon preached in America by William L. Watkinson. Whatever the origin, I think it is a good and relevant observation.

So may you have a light-filled Christmas this year, filled with the hope and the light of the love of God.

*Simon*

---

---

## **Add A Prayer to the Christmas Tree in St Mary’s Church Great Milton**

This year we are doing something a little different with our Christmas Tree at St Mary’s. We would love you to come to the church and write a prayer on a card provided. Then hang it on the Tree adding to all the lights and decorations.

Christmas is a time not only for celebration but also for reflection. You may want to remember someone who is lonely, ill or bereaved, pray for peace or say something in gratitude. The choice and the prayer is yours!

The Christmas Tree will be in the Church from the 1st December. It is open daily from 9am-5pm. Entrance is by the north door, the opposite side to the main entrance.

Cards and ribbon are provided.

---

---

## **Great Milton Methodist Church Services**

**For further info. please contact Rev Stephen Spain on 01865 763676**

<b>December 2024</b>				
<b>Date</b>	<b>Time</b>	<b>Church</b>	<b>Preacher</b>	<b>Comments</b>
1st	11:00am	Gt. Milton	Local Arrangement	
8th	11:00am	Gt. Milton	Rev. Miriam Moul	
15th	11:00am	Gt. Milton	Paul Rosentall	
22nd	3:00pm	Gt. Milton	Rev. Stephen Spain	Holy Communion
24th				No service
25th	9:30am	Gt. Milton	Rev. Stephen Spain	
29th				No service



A very happy Christmas to you all from Great Milton History, and a reminder that we will close on December 18th for the holiday, and will reopen on January 8th 2025.

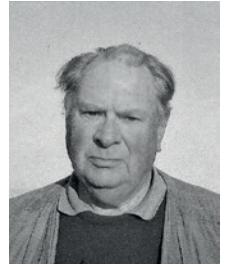
### 100 Words

If only the Green could talk... "I can remember when you could walk down Bell Lane. You could choose whether to drink at the Bull or the Bell. You might just see Jobey running stark naked as New Year struck! You might have visited the Antique shop, or the Sweet shop, and posted a letter at the old Post Office. You could have watched the Hunt meet, or the Christchurch beagles, had a pull at the Tug of War, leaned up against the Jubilee Oak and watched the bride and groom posing for photographs. Maybe pop into the Old Stores, or the Saddlery, maybe see the Tally Ho coach and four pull up at the Bull! I wonder what will happen next...!"



## View from Views

The weather is something to believe so mild, so damp, nothing drying inspite of the fact we had no rain to speak of between 21st October and at the time of writing, (mid-November) we still have been unable to cut our Lupins, some having already fallen out, this is due to them naturally shedding seed for next year's regeneration. As a consequence of the mild weather, the crops we planted were through the ground in just over a week (would not normally be up at this time of year in less than 2 weeks) One blessing must be that although the damp is in the air the land will be drying out, allowing those on the heavier wetter land to be getting on with some land work at last, after the devastating wet of September 22nd to 24th. We have started to move the Wheat that sat in 2 inches of water, it has been extremely difficult operation as we have to shovel the grain up from the floor leaving the wet behind, so far three loads have been loaded, with only one being rejected for being too wet, which is not a bad record. Now as it was returned, we have find a way to dry it ready for resale, which will prove rather expensive with the added bonus of having to pay for the extra haulage. By all accounts the Poppies will be our saving grace this year, as they have yielded very well.



Just before the September cloudbursts we baled up some late silage in our river meadows, and of course the floods came up before we could collect them, one is now floating in the river, how we retrieve it is another matter I as it is behind a tree with some of its plastic wrap caught up in said tree, who'd be a farmer? November 14th saw us planting Beans and some more Wheat on the ground where the Lupins failed, as the lupins still have not been harvested it was decided to at least get a bit more Wheat in the ground.

I have been known to say that I don't really believe that Britain is as nature deplete as is made out to be well, a recent report, by the Science for Sustainable Agriculture, states that although it might 2.93% nature deplete and in the bottom 10% globally, it is actually in the top 23% in the world for biodiversity, this is a heartening aspect to consider when you understand our population density, and the need to produce more food for ourselves. On a slightly different tack, I cannot explain is why this autumn there seems to be no or at least very few Hawes (Hawthorn

berries). I can't remember how they flowered in the spring, I remember the Blackthorn flowering over a very long period. This means that the birds that rely on these berries may well go hungry, I am not sure how we can help them or if we should.

At a recent Farm Cluster meeting we discussed bird life along the Thame, we were informed that there had been several sightings of species not reckoned to be natural in the UK or this area namely a Bittern, a Cattle Egret, and Garganey Goose. This is very encouraging and is a result of extensive research by volunteers. This has enabled the set-up of a very involved and comprehensive website, where you find out where most species are most prevalent and, many other combinations along the length of the Thame. When the river floods and recedes, many different species visit, apart from Swans, Geese, Gulls and Ducks, and other more normal water fowl, I think I have seen a Cattle Egret. Also, I disturbed 10 Snipe on one of our wetter fields. This Autumn there seems an abundance of Starlings around which is encouraging when we are led to believe they are in the decline, plus many Sky Larks and, Corn Buntings. The cluster is involved in a drive to eradicate the Mink from the Thame, so that the water vole can be reintroduced, so far we have accounted for over 30 Mink.

It is too soon for my simple mind to understand the ramifications of the Budget, what I do know is that a lot of my fellow farmers are not very happy. Jeremy Clarkson says he thinks "farmers have been shafted", James Rebanks says "it's a disaster of epic proportions" Kirsty Allsopp says "she has zero understanding of rural voters", but obviously understands the implications. My thoughts so far are that if the family farm is decimated by these measures, we could see many having to employ measures they would otherwise rather not. By this I mean some of the energy companies are offering very substantial rents on a ten-year basis for Solar farms and the like. Land will also attract many outside investors who only see land as a cash cow by being paid to plant trees, and the many other schemes that attract government money, without thought for the countryside or environment. These are real risks with Ed Milliband pushing so hard for these green energy initiatives.

On these cheery notes, I would like to wish all readers of my little column all the very best for Christmas and a calm "Trump" New Year

*Charles Peers 17/11/2024*

## **Morland House Surgery**

**Morland Close, Wheatley OX33 1DP**

The usual surgery opening hours are Monday to Friday 8am to 6.30pm Saturday mornings (excluding Bank Holiday weekends) 8am to 10.30am, for prebooked consultations only.

Enhanced access hours are offered outside these times, please speak to one of the reception team on 01865 872448 for more information.

When the surgery is closed, please contact the Out of Hours service by phoning 111.

Ordering Repeat Prescriptions: Please use the NHS App or log into your account on the NHS website. For more information on ordering, visit the 'prescriptions' page on our website.

Check and Cancel – you may now check and/or cancel an upcoming appointment via our telephone system. From the main menu, just press 1.

Covid and Flu Vaccine Clinics – if you are eligible for an NHS flu and/or winter Covid-19 vaccine and not yet had yours, you can still book at the surgery. Please contact the reception team to make an appointment.

RSV vaccine (Respiratory Syncytial Virus) - invitations have been sent out to those aged 75 to 79 years old.

Visit Morland House Surgery Website for a wealth of information and guidance on managing a vast number of health conditions, symptoms, and treatment: [www.morland-house.co.uk](http://www.morland-house.co.uk) For example:

- Medical Records and Test Results - guidance on how to access this information.
- Pharmacy First Service (PFS), whereby pharmacies can treat directly seven common health conditions.
- Group Consultation Clinics – Group clinics are currently being offered for the menopause and hypertension. Eligible patients are being invited to attend, but if you would like to know more, please do contact us.
- Whooping Cough infections, symptoms and treatment
- Drink Coaches – take the quick and confidential text
- Travelling abroad – what MHS can and cannot do for you

## Tons Together (Little Milton) WI

In November, Kally Peigne from Betty Bloom Dance taught us a Bollywood dance routine. A great evening followed by much needed tea, cake & chat.

On Thursday December 12th, Peter Buchan-Symons is coming to tell us all about Origami and then he'll show us how to do it in a mini workshop. Come along at 7.30pm and have a go at the art of paper folding.

Everyone always welcome, men too! Visitors £5.

On Thursday 9th January, we have our annual New Year dinner (venue TBC). Let me know if you'd like to join us for dinner, everyone welcome.

Do you live in Little Milton, Great Milton, The Haseleys, Stadhampton or surrounding villages, new to the area, want to meet new people, make new friends? Then join Tons Together WI and meet like-minded, local women of all ages in an informal, friendly group.

We meet every 2nd Thursday of the month in the Pine Lodge OX44 7PZ at 7.30pm

Too shy to come by yourself or need a lift? Contact us & we'll find you a WI buddy.

Like us at [www.facebook.com/Impinelodge](http://www.facebook.com/Impinelodge)

Pine Lodge website: [www.lmvh.org.uk](http://www.lmvh.org.uk)

Kath Stacey 01844-279438 [tonstogetherwi@oxfordshirewi.co.uk](mailto:tonstogetherwi@oxfordshirewi.co.uk)

---





THE  
GREAT MILTON CHURCH  
**CHRISTMAS  
MARKET**

AT THE BULL

MEET FATHER CHRISTMAS & HIS REINDEER  
ENJOY OUR FESTIVE MARKET, BBQ  
& MUCH MORE!

14  
DEC

3.30PM – 6:00 PM  
THE BULL PUB  
The Green, Great Milton

SPONSORED  
BY  
A W MOBBS  
&

**Book your session in Santa's Grotto!**

Enjoy a hand decorated biscuit, a cup of milk, a  
gift and a story with Father Christmas!

£15 per child | Contact 07889 703791 to book

monkeypussie

EST

2023

THAME

# **GREAT MILTON PARISH COUNCIL**

## **GREAT PART-TIME JOB OPPORTUNITY!**

Due to an unexpected change in circumstances, Great Milton Parish Council needs a Parish Clerk to start as soon as possible.

The Clerk's duties, while crucial to the smooth functioning of the Parish Council, are not onerous, consisting mainly of administrative tasks such as:

- Preparation of the Agenda for the forthcoming meeting, with notes to guide Councillors
- Attendance at the Parish Council meeting – currently the 3<sup>rd</sup> Monday of the month at 1930h in the Pavilion
- Taking of minutes at the meeting and circulating as necessary
- Making out and distributing cheques following signing at the meeting, and recording these outgoings in the ledger
- Managing planning applications through the process of investigation and approval by the relevant councillor
- Some basic accounting functions are required but full training is provided for these
- On-the-job training is provided for all Council functions and the role has the full support of the Parish Councillors
- Other general administrative duties as required.

Some computer literacy is required, together with organisational and administrative abilities. The position is the only formally employed role on the Parish Council and carries a salary of around £600+ per month, requiring about 30 hours of work each month.

The Council would welcome applications from any interested parties, with a view to appointing to the role as soon as practicable.

Please apply directly to the Chairman, Great Milton Parish Council, by email at [stephen@wildhorn.co.uk](mailto:stephen@wildhorn.co.uk) or talk to your local councillor.

If you have any questions, please call on 07944 077 209.

**Steve Harrod**

*Chairman*

Great Milton Parish Council

# GREAT MILTON NEIGHBOURHOOD WATCH

## LION “MESSAGE IN A BOTTLE” SCHEME

These bottles are designed to hold important information about you and your medical needs. In case of an emergency, ambulance crews know where to find your bottle and ensure you get the care you need.

### **The bottles are free and could save your life**

All you need to do is complete the enclosed form, with details of your next of kin and any information about diagnoses, medication, allergies etc. Then pop the bottle in the shelf of your fridge door. You'll also find two green self-adhesive labels in the bottle. Put one on the inside of your front door and the other on the outside of your fridge.

### **Ambulance crews are trained to look for the green stickers**

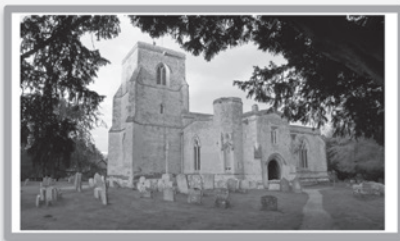
#### **You can pick up your free bottle from:**

Morland House Surgery  
Health centres  
Pharmacies

Or contact Rod Snowdon (Neighbourhood Watch)  
on 07836 728919 or via the Village WhatsApp group.

It would be useful if you could let Rod know if you're using this scheme or if you find anywhere else that distributes the bottles.

Thank you.



**St Mary's Church**, an intrinsic part of the local community for over 900 years, invites *you* to discover more about its history and its unique features by connecting with the Info-Point inside the building. Anyone with a device containing a modern web browser can use Info-Point's Wi-Fi hotspot to gain free access to the content.

- ❖ Take the 11-point interactive tour around the building.
  - Learn about the unique organ.
  - Listen to the church bells.
  - Discover the mystery of the empty external niches.
  - Find out about the musical instruments which were once displayed (and now illustrated) near the south door.
- ❖ See a bird's-eye video of the historic building.
- ❖ The early 17<sup>th</sup> Century Dormer Monument, regarded as one of the most important monuments of its period in the county, has just been extensively restored.
  - Find out about the professional conservation work.
  - See photographs of the monument both before and after restoration.
  - Learn about the Dormer Family.

St Mary's Church is open every day with access via the North Door. Purchase a copy of the 'St Mary's and Great Milton' booklet (available in the church) for more comprehensive information about the Church and the Village.

How to connect to the Info-Point is clearly displayed inside the Church.

# Great Milton Post Office and Stores

## Opening Hours

	Shop	Post Office
Monday	8:00 – 5:30	9:00 – 5:30
Tuesday	8:00 – 5:30	9:00 – 5:30
Wednesday	8:00 – 1:00	9:00 – 12:30
Thursday	8:00 – 5:30	9:00 – 5:30
Friday	8:00 – 5:30	9:00 – 5:30
Saturday	8:00 – 12:30	9:00 – 12:30
Sunday	8:30 – 11:00	Closed

**Bank Holidays – Closed All Day**

## The Three Villages Car Service

The Three Villages Car service exists to help people who are having difficulty in getting to their doctors' appointments.

If you have to get to your GP surgery or Thame Hospital for an appointment and need help getting there, give us a call and we will help if we can.

**Jane Jefferis – 01844 278743 or  
Wendy Richardson – 07763 800467.**

## Need a venue? The Pavilion & Recreation Ground

**Ideal for children's parties, meetings, family get togethers, classes and lessons, corporate days and sports events.**

**Table and chair hire also available**

**For booking and more info, please email Caroline at [carolinesmith@2redroofs.com](mailto:carolinesmith@2redroofs.com)**

## Neighbours' Hall

A large recently refurbished community Hall with Wifi, central heating, new lighting and well-equipped kitchen. The

Hall benefits from a bar, stage and smaller room opening on to an enclosed patio garden area overlooking Le Manoir orchard. The Hall has good car parking facilities. It is ideal for community groups, children's parties, family get togethers, company functions, weddings and special celebrations.

Available for hire by the hour or the day.

Cost for hiring  
£15 per hour, £120 for the full day

Please contact our Booking Secretary

Janet Smith on 07970 264667



## Great Milton History

has a new home behind  
**The Old Garage**

Browse the Archive  
Purchase Books  
Study Old Maps  
Contribute to the collection  
of village Family History

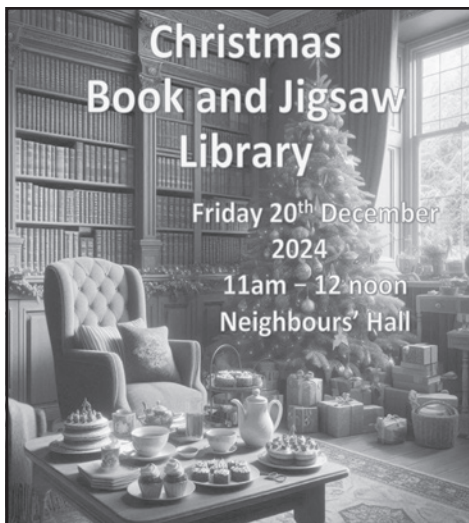
Open on Wednesdays  
10:30am – Midday  
or by arrangement

[http://www.great-milton.co.uk/  
great-milton-history/](http://www.great-milton.co.uk/great-milton-history/)

## Christmas Book and Jigsaw Library

Friday 20<sup>th</sup> December  
2024

11am – 12 noon  
Neighbours' Hall



Come and take, swap or donate a book or two;  
we also have a good choice of jigsaw puzzles.

Tea, coffee and cakes are provided in the  
Orchard Room to enjoy whilst you browse!

Please feel free to make use of the Library any time you  
visit the Neighbours' Hall

## BULLETIN ADVERTISING

1/4 page (w62mm x h90mm)  
£5 or £50 per year

1/2 page (w128mm x h90mm)  
£10 or £100 per year

Full page (w128mm x h185mm)  
£20 or £200 per year

**Full back page colour**  
**£35 or £350 per year**

Adverts for community or fund-raising  
events can have quarter page free.  
Larger sizes are charged at half the  
normal rate.

Please contact (tba)

Tel: —

Email: [contact@clerkgreatmilton.co.uk](mailto:contact@clerkgreatmilton.co.uk)

# CHRISTMAS FAIRE

At the Pine Lodge, Little Milton

Saturday 14th December

Activities 2 – 4.30pm

Come and start the Christmas countdown

- ✓ Santa's Grotto
- ✓ Festive food & Drinks
- ✓ Christmas Gifts
- ✓ Tombola
- ✓ Kids Activities & Games

In aid of The Orchard Pre-School,  
St James' Church, Little Milton School &  
The Pine Lodge



## Morland House Surgery, Morland Close, Wheatley OX33 1DP

The usual surgery opening hours are Monday to Friday 8am to 6.30pm  
Saturday mornings (excluding Bank Holiday weekends) 8am to 10.30am, for  
**prebooked** consultations only

We also offer Enhanced Access hours outside of these times, please speak to one of our  
reception team on 01865 872448 for more information.

### Ordering Repeat Prescriptions:

Please use the NHS App or log into your account on the NHS website. For more information on  
ordering, please visit the 'prescriptions' page on our website.

Please visit [www.morland-house.co.uk](http://www.morland-house.co.uk) for lots more information

When the surgery is closed, please contact the Out of Hours service by phoning 111



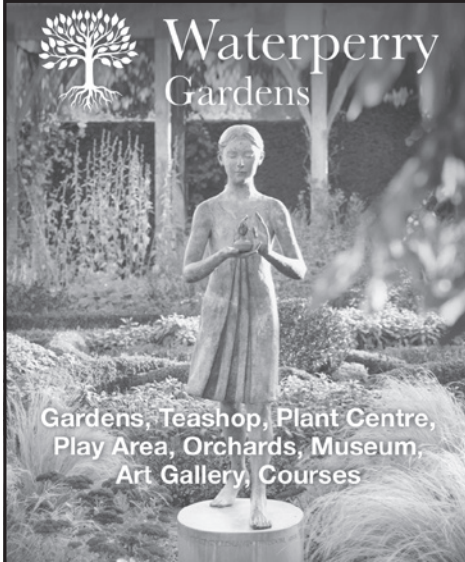
Enhance the appearance of your property  
with our quality assured friendly service



**Moss Removal & Roof Cleaning - Roof Maintenance & Repairs**  
**Render & Brickwork Cleaning - Patio Cleaning**  
**Installation of Bird Protection & Chimney Cows**  
**info@mossinator.co.uk - 01865 362797**



**Waterperry  
Gardens**



**Gardens, Teashop, Plant Centre,  
Play Area, Orchards, Museum,  
Art Gallery, Courses**

Open All Year Round

Waterperry Gardens, Nr Wheatley,  
Oxford. OX33 1LA. T. 01844 339226.  
[www.waterperrygardens.co.uk](http://www.waterperrygardens.co.uk)

Get into the festive spirit at Waterperry Gardens with great gift ideas for all the family, from handmade ceramics and jewellery to Christmas decorations and linens, there is something for everyone. If you're looking for something different our Waterperry Vouchers and Season Tickets make an ideal present.

**FIND SANTA'S REINDEER TRAIL!**

**Daily till Tues 24 Dec - 10am till 4pm**

Help Rudolph find his friends lost all around the gardens and win a prize! £3.95 per child. Children must be accompanied by an adult paying garden entrance fee.

**CHRISTMAS MARKET**

**Sat 7 & Sun 8 Dec - 10am till 4pm.**

Join us for our Christmas Market - Arts and Craft Stalls with gorgeous handmade gift ideas and festive food and drink (free entry to markets).

**CHRISTMAS TREES**

The spectacular British grown Christmas trees will be on sale from the beginning of December along with fantastic Waterperry hand-finished Christmas wreaths.

**PRE-ORDER CHRISTMAS GOODIES**

Let the Teashop at Waterperry take the strain out of cooking and pre-order your festive treats, like Christmas Cake, Christmas Pudding, Mince Pies and more.

Contact [teashop@waterperrygardens.co.uk](mailto:teashop@waterperrygardens.co.uk)

**Christmas Closure**

We will be closed between Christmas and the New Year.



# ABC Gas and Plumbing Limited

Your local gas safe registered engineer

Boiler installations \* Power flushing \* Leaks \*  
Servicing \* Domestic plumbing \* Gas safety  
checks \* Renewables \* Taps \* Radiators

24 hour  
emergency  
call out

**Voted Plumbing & Heating  
engineer of the year 2023**



Mobile: 07894466025 or 07849116805

Email: ABCGasandPM@gmail.com

Website: [www.ABCGasandPlumbing.co.uk](http://www.ABCGasandPlumbing.co.uk)

Landline: 01865 368731

40 Elm Drive, Garsington, OX44 9AQ



## SOUTH OXFORD BUILDING SERVICES LTD

YOUR LOCAL BUILDER

EXTENSIONS | RENOVATIONS

LISTED BUILDINGS

**CONTACT US**

**01844 278100**

[www.southoxfordbuildingservices.com](http://www.southoxfordbuildingservices.com)

# Greenplant.

Plant & Tool Hire



## Trusted Local Plant, Tool & Event Hire

Generators, Access, Crowd Control, Lighting,  
Delivery, Collection, 24/7 Customer Care.

Call Now to Discuss Your Event!

Your closest depot...

Unit 1 London Road  
Wheatley  
Oxford  
OX33 1JH



View our catalogue & hire online:  
[www.greenplant.ltd.uk](http://www.greenplant.ltd.uk)

[mail@greenplant.ltd.uk](mailto:mail@greenplant.ltd.uk)

Call 01865 876 000

# MSM Electrical

- Full Rewires
- Extensions
- Extra Sockets & Lights
- Garden Lighting & Power
- Electrical Vehicle Charging Points
- Small Jobs Welcome



REGISTERED PART P  
LANDLORDS CERTIFICATES

Contact Martin Shaw: 07860 795 605 / 01865 872681  
[msmelectrical61@gmail.com](mailto:msmelectrical61@gmail.com)



## A D OUSLEY



### Domestic & Commercial ELECTRICIAN

All types of electrical installation work  
including test and inspection and certification

Tel: Adam on 01844 339793 Worminghall  
or 07976 352293 (8:00am – 5:30pm)

Email: [adousley01865@gmail.com](mailto:adousley01865@gmail.com)

*Registered member of the  
ECA and NIC EIC*



# Wheatley Painters

Interior & Exterior painting and home repairs.

If it has a surface, then we can paint it!

Info@wheatleypainter.co.uk

Free quote next working day!

07456816763

[www.wheatleypainter.co.uk](http://www.wheatleypainter.co.uk)

A trusted locally-based family business, providing painting and decorating, as well as home-repair services, plastering, refurbishment and silicone rendering, to customers across Oxfordshire.



**We are a unisex hair salon offering the latest in hair styling & Design, which has been trading for 20 years. The family run salon has recently relocated to Great Milton, and is loving being back in our home village.**

**Our friendly and helpful team will help you achieve the look you are after, with the minimum of fuss, so that your time spent with us is a relaxing experience.**

**Please call us to book an appointment, or discuss your requirements, and we will be more than happy to help you in any way possible.**

**Tel: 01844279503 or 07760252486**

**Email: [sistersedge@btinternet.com](mailto:sistersedge@btinternet.com)**

**Web Page: [sisters-edge.co.uk](http://sisters-edge.co.uk) or [sistersedge.co.uk](http://sistersedge.co.uk)**

**Lynday, Thame Road, Great Milton. OX44 7NY**

# LOOKING FOR THE RIGHT PLACE FOR YOUR BUSINESS?

Where people and the planet matter.



Serviced Offices | Business Units | Meeting Rooms | Hot Desks | Virtual Support



Monument Park, Chalgrove OX44 7RW  
01865 893200 | [hello@jennings.co.uk](mailto:hello@jennings.co.uk) | [jennings.co.uk](http://jennings.co.uk)



## **Wheatley Dental Practice** **01865 873314**

We are currently accepting new patients at our friendly local dental surgery.  
Please phone our receptionists or call in for more details!  
Tooth whitening and facial aesthetic treatments available.

**Catherine Peers BDS, Claudia Conde MClintDent Lond.**  
Dental Surgeons

**Rachel Hyde RDH, Julie Davies**  
Dental Hygienists

96 Church Road, Wheatley, OX33 1LZ  
[wheatleydental@gmail.com](mailto:wheatleydental@gmail.com)

# REALLY SHARP

KITCHEN KNIFE AND GARDEN TOOL SHARPENING SPECIALIST

## KITCHEN KNIVES

SHORT KNIFE (UP TO 5" OR 125MM)

LONG KNIFE (OVER 5" OR 125MM)

MEAT CLEAVER

## GARDEN TOOLS

GARDEN SHEARS

SECATEURS

HALF-MOON EDGING IRON

HOE

CHAIN-SAW CHAINS

HEDGE CUTTERS

AND MUCH MORE....

EMAIL [CHRIS@COOPERS-COTTAGE.COM](mailto:CHRIS@COOPERS-COTTAGE.COM) FOR A PRICE LIST.

# SANDY LANE FARM

Local. Seasonal. Organic.

Est. 1985.

Sandy Lane, Tiddington OX9 2LA



**Organic veg box delivery, farm shop & coffee bar**

Thursday & Friday 10:00 - 16:30 / Saturday 10:00 - 14.30

For all info visit @sandylanefarm

[www.sandylanefarm.co.uk](http://www.sandylanefarm.co.uk)

Private **CLEANING**  
**OXFORDSHIRE**

- ✓ 14+ years of experience
- ✓ Family-run local business
- ✓ Fully trained in Health & Safety and COSHH
- ✓ 4.9 rating on Google (out of 69 reviews)
- ✓ Your neighbours' favourite cleaners



**CALL NOW !**

 01865 58 08 79;  07411 606 609

[www.privatecleaningoxfordshire.co.uk](http://www.privatecleaningoxfordshire.co.uk)

**Graham Blake**  
soft furnishing

- Loose covers
- Curtains
- Re-Upholstery
- Tracks & Poles

**TEN YEAR GUARANTEE**

For personal, helpful service  
please call

Tel: 01844 261769

Mob: 07802 213381

[grahamblake123@btconnect.com](mailto:grahamblake123@btconnect.com)

[www.grahamblake.com](http://www.grahamblake.com)

**ASHURST ARCHIVES**

**STORAGE**

- Archive and Documents
- General Household
- Car
- Boat
- Caravan
- Business
- Short or long term

**HOLLANDS FARM  
GREAT MILTON**

[jonnie@hollandsfarm.com](mailto:jonnie@hollandsfarm.com)  
07768 408389

**M.R.F.**  
LIMITED

**Window Cleaning Services**

**M. FRY**

**Domestic & Commercial Window  
Cleaning & Gutter Maintenance**

**Fully Insured**

**Member of the Federation of  
Master Window Cleaners**

1 LONDON ROAD, WHEATLEY, OXFORD OX33 1YW

E: [michael.fry4@btopenworld.com](mailto:michael.fry4@btopenworld.com)

**MOBILE: 07887 515168**



**TIDDINGTON**  
GARAGE

**Electric & Hybrid Specialists**

**Servicing & Repairs**

**MOT Testing incl. While You Wait**

**Up to Dealer Level Diagnostics**

**Air-Conditioning On All Vehicles**

**Clutches incl. DSG**

**Tyres, Brakes & Tracking**

**Free Courtesy Cars & Collections\***

**Oxford Road, Tiddington, Oxon, OX92LH**

**01844 339210**

**[www.tiddingtongarage.co.uk](http://www.tiddingtongarage.co.uk)**



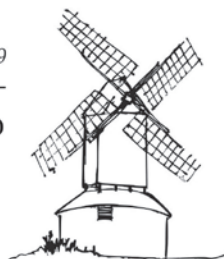
*\*subject to T&C's*

**GoodGarageScheme.com**  
Registered Member



# Windmill Windows

Est 1999



www.windmillwindows.com / Tel: 01844 237070

"Windmill Windows is a local family run business established in 1999, supplying and installing a large range of products in all materials, including uPVC, Composite, Timber and Aluminium.

Please feel free to pop in to see us, call us or visit our website for any information you are after. All our quotes are free of charge and obligation free."

Address:

Unit 1,  
68 Worminghall Rd  
Oakley, Bucks  
HP18 9QY



Products:

- \*Windows
- \*Doors
- \*Bi-Folds & Patio Sliders
- \*Conservatories
- \*Fascia / Soffit & Guttering
- \*Glazing

## GT Cars

Your Local Private Hire  
& Taxi Service  
(Formerly Courtesy Cars)

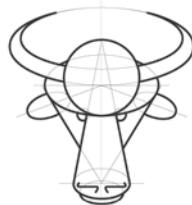


**01865 343575**

Email: [gtcars36@gmail.com](mailto:gtcars36@gmail.com)

**Local & Long Distance Travel**  
**Airports/Seaports**  
**London City**

Credit Card payments accepted in all vehicles



**J.M. DUDLEY**  
**GRAPHIC SERVICES**

Artwork Creation  
Photo Retouching  
Colour Printing  
Photocopying  
Scanning

**01844 279761 07721 457035**  
**JONNY@ORODRUI.CO.UK**

# Diary

- Monday Spark Yoga – The Neighbours Hall. 9:15am  
*contact Claire – sparkyoga1111@gmail.com to book or for more details*  
Arts & Crafts Club – The Pavilion. 1st Monday of each month. 6:30 – 9:00pm  
*contact carina.martin@gmail.com*
- Tuesday Athletics Club. Year 8+. 6:00–7:30pm. Horspath Sports & Athletics Ground.  
*enquiries.gmac@gmail.com*
- Wednesday 2nd Wed: Coffee Morning at The Methodist Chapel. 10:00am – Midday
- Thursday The Neighbours Club. Alternate Thursdays. *contact Janet Earl – 01844 279432*  
Sandy Lane Farm Market. 10:00am – 5:30pm.  
*contact Sandy Lane Farm – 01844 279269 www.sandylanefarm.net*  
Athletics Club. Year 4–7. 6:00–7:30pm. Horspath Sports & Athletics Ground.  
*enquiries.gmac@gmail.com*  
Badminton – Great Milton School Hall. 7:00pm – 10:00pm  
*contact Daphne Holland – 01844 214198*  
Bellringers – St. Mary’s Church Tower. 7:30pm – 9:00pm  
*contact Pat Cox – 01844 279300. www.gm-bellringers.freeuk.com*
- Friday Vinyasa Flow Yoga – The Neighbours Hall. 9:15am  
*contact Claire – sparkyoga1111@gmail.com to book or for more details*  
Sandy Lane Farm Market. 10:00am – 5:30pm. *contact: see Thursday*
- Saturday Old Field: 2nd Saturday of each month. 10:15am – 12:00pm.  
*Contact Alex Kirkman – 01844 278090*  
Sandy Lane Farm Market. 10:00am – 2:00pm. *contact: see Thursday*

## December

14th Sat	Christmas Market at The Bull	3:30pm
16th Mon	Parish Council Meeting at The Pavilion	7:30pm
20th Fri	Christmas Book and Jigsaw Library at The Neighbours’ Hall	11:00am
25th Wed	Christmas Day	—

All copy (except adverts) to [gmbulletin@hotmail.co.uk](mailto:gmbulletin@hotmail.co.uk) by **20th December 2024**.

Sheppard Cottage, Lychgate Lane, Great Milton, Oxford OX44 7PB.

Adverts to the Clerk .

[parishclerk@greatmilton-pc.gov.uk](mailto:parishclerk@greatmilton-pc.gov.uk)

The views expressed in this bulletin are not necessarily those of the Editor nor of the Parish Council.  
The Editor reserves the right not to print items submitted for publication, and to edit those which are published.

# Find *Your* Perfect Christmas Tree

NON-DROP CHRISTMAS  
TREE FARM

---

GREAT HASELEY OX44 7JS

OPENS 23RD NOVEMBER

FROM 9.00AM - 7.00 PM

---

DECORATIONS & WREATHS

FREE LOCAL DELIVERY

CHILDREN WELCOME

---

 [christmastreesoxford.com](http://christmastreesoxford.com)

 07701 027 890

